





TABLE OF CONTENTS

1	Letter from the President & Board Chair	11	<i>Greater</i> Recognition
2-3	<i>Greater</i> Achievement	12-13	<i>Greater</i> Giving
4-5	<i>Greater</i> Innovation	14-15	<i>Greater</i> Connections
6-7	<i>Greater</i> Legacy	16-17	<i>Greater</i> Impact
8-9	<i>Greater</i> Empowerment	18-19	Donor List
10	<i>Greater</i> Reach	20-21	Volunteer List and Corporate Sponsors

DEAR FRIENDS,

Thank you for making 2013 one of the most generous in our 33-year history. This past year, hundreds of visionary donors selected us as their partner in giving, and together, we awarded more than \$4.2 million in grants and scholarships—an increase of nearly 15% over 2012.

Part of what makes our community foundation unique is our diverse and expanding set of donors and fundholders. These generous individuals, families, organizations and businesses—each with their own charitable goals—chose to invest in the community in partnership with us. Our donors directed more than two-thirds of the grants awarded this past year.

Nonprofit organizations used these funds to support a number of good causes and provide critical solutions to important needs right here in our community. These gifts continue to enrich education, safeguard health, protect the environment, strengthen families—and much more.

Each day at the Community Foundation, we invite people with a vision and passion for community to create something greater together. *Greater* opportunity. *Greater* empowerment. *Greater* impact. *Greater* hope. *Greater* generosity.

We serve as an anchor to support our region: a collection of hundreds of funds, created by a multitude of residents who each take the initiative to champion a wide variety of causes in the community.

Alongside supporting our donors and fundholders to shape their giving legacies and stewardship of community endowments, we launched several new initiatives this year to respond to changing community needs.

We introduced an impact investing program to spur economic opportunity and job creation for socially-minded small businesses and nonprofits.

We partnered with a private foundation to launch Spark Grants—an innovative micro-grants program designed to build on community insights and assets by empowering everyday people to create change in their neighborhoods.

We joined with the Foundation for Tacoma Students to work side-by-side with the community to develop a new approach toward educational achievement for middle and high school age youth.

Day after day, we are here for you and for our community—committed to growing and changing to meet the region’s emerging needs while maintaining our original vision to pool charitable resources of community members for the benefit of all.

As you read this year’s Annual Report, you’ll meet many of our local donors and change makers who are working to improve lives. We are grateful to them, and to you, for your continued partnership and look forward to another exciting year ahead.



*Rose Lincoln Hamilton*

Rose Lincoln Hamilton  
President & CEO

*T. Gary Connett*

T. Gary Connett  
Board Chair





*Between Wolf and Moon*  
by Shaun Peterson,  
2013 Foundation of Art Award Winner



# Greater ACHIEVEMENT

Investing in education is one of the most powerful ways to help create a better future for a person and their family.

## INVESTMENT IN EDUCATION...

-  Makes people healthier and lengthens life expectancy
-  Improves socioeconomic status
-  Improves quality of life for future generations
-  Increases a person's access to better work conditions

These benefits can hold true for people of any ethnicity, income level, or gender.

The advantages of education carry over to the community too, as people with **greater educational attainment** show higher rates of **voting and volunteering**, and **lower levels of incarceration**.

## Greater COLLECTIVE ACTION

In 2010, only 58% of Tacoma's high school seniors graduated, compared to the state-wide graduation rate of 74%. Since then, a game-changing approach has gained momentum, bringing community voices to the table and setting a shared goal to increase high school graduation rates to 87% by 2020.



Supported from an early stage by the Community Foundation, the **Foundation for Tacoma Students** (FFTS) is leading this exciting initiative to foster a city-wide culture of high expectations and shared responsibility for student achievement.

By forging partnerships, aligning resources, and creating a shared community vision,

FFTS strives to help every student achieve academic success that prepares them for college, work, career and life. For donors, this means they will have the opportunity to see their gifts go further and have even more impact.

We're proud to partner with FFTS and our community to advance this vital work.

As a community, we each play a critical role in the academic achievement of our students. Here are a few other ways you can help youth succeed:

- Act as a caring adult mentor
- Provide safe places
- Help youth connect to the workplace
- Provide volunteer opportunities

## Greater OPPORTUNITY

The Community Foundation is home to **90 scholarship funds** set up by individuals determined to reduce financial barriers for people to achieve their academic dreams. These funds have successfully awarded more than **\$3.4 million** in scholarships.

Starting a scholarship fund or contributing to one of our existing scholarship funds is a valuable way to give back. More often than not, students with the fewest financial resources gain the most from a college or trade school degree.

## Greater HOPE

Long-time Tacoma resident Lea Armstrong began her life in war-torn South Korea. At 22, she came to the U.S., bringing nothing with her but \$50 and her "dream of a successful life."

Through hard work and an "economic system that provided her opportunity," Lea became a very successful businesswoman, today offering hope to others.

"I've learned that people feel that they're hopeless because no one cares for them," shared Lea. "As long as they know that there's someone there to help them, that they have someone to turn to, then they have hope."

In 2003, Lea launched a scholarship program that to date has awarded over 130 scholar-

ships and more than \$165,000. Designed to help single parent students, the scholarship offers recipients flexibility to use the money for anything they may need—from childcare to tuition payments to transportation costs.

"My philosophy of life is 'caring and sharing.' Giving has to be a part of you, a part of your lifestyle. It starts with the small things. A lot of people say, 'I don't have anything to give' but everyone...can give part of their time for people."



Hear Lea share the story of why she gives at:  
[gtcf.org/scholarship](https://gtcf.org/scholarship)



# Greater INNOVATION

What happens when you lower the barriers for grassroots leaders to spur connections and community action? When passionate ideas turn into action with a \$1500 micro-grant? Last spring, we launched a new grants program—**Spark Grants**—to find out.

We encouraged innovative connoisseurs of community to apply, those with the skills to bring people together in compelling ways—to build on community strengths and address community challenges. The projects selected may seem to have little in common, but they share a goal—getting community members together to have fun, learn, and share with one another about the community and about their place within it.

“MY SPARK GRANT AWARD HELPED ME LEARN IT’S IMPORTANT NOT TO WORRY SO MUCH ABOUT FAILING, BUT INSTEAD TO THINK ABOUT THE PEOPLE YOU WILL BE SERVING.” - MICHAEL CHANSAVANG



The **REALLY BIG TABLE PROJECT** is a mobile table designed to build community through open dialogue. A new staple at community festivals and gatherings, anyone can join the table to share ideas about making the community a better place to live, and enjoy local, sustainable snacks. Ultimately a community-owned resource, the table makes use of overlooked public spaces and encourages sustainable transportation—the table itself is folded and moved only by bicycle.

Last summer, the **ORTING VALLEY FARMER’S MARKET PROJECT** kicked off a series of Friday evening markets, bringing much needed business and nutrition to a town with only one local grocery store. Despite the Valley’s rural setting, this was the first farmer’s market in the area centered on providing fresh produce. Aptly described as “a wholesome gathering place for the entire community,” the market provided entertainment, greater access to organic local produce, and free cooking and gardening lessons.



Held in a local park, the **TACOMA YOUTH BASH PROJECT** was created as a fun-filled, end-of-summer event for the youth of Eastside Tacoma to appreciate and take pride in their neighborhood. A platform for different youth to connect, the event brought 300 people together for free food, local bands, a 3-on-3 basketball tournament, and various resource information booths. Its organizers hope to continue the event as a summer highlight for youth who often don’t have a family vacation to look forward to.



The **SOLSTICE COMMUNITY CANNING PROGRAM** builds ties between diverse people by bringing them together for canning parties where they learn the resourceful skill of preserving food. Next year, local partners can also use the equipment to host their own canning parties. The Solstice Canning Program is committed to broadening access among low-income families to sustainable, affordable, and healthy food sources.

The **TACOMA253 PROJECT** uses photography to present the city through the stories of its residents—fostering understanding by validating different opinions and experiences. Some photos highlight local landmarks, while others profile individuals, including their reflections on the meaning of happiness and how we can take better care of one another. The photographer invites community dialogue by featuring the perspectives in the photos both online and at a local art gallery.





# Greater LEGACY

Create permanent good for the community you love and the causes you care about.

When you entrust the Community Foundation with your giving legacy, we make charitable gifts in your name, forever, according to your charitable wishes. Our relentless stewardship ensures each grant from your fund does the good you intended it to do for generations to come.



In 2011, Donald “Don” and Mary Williams entrusted the Community Foundation with a transformational bequest of \$15 million. As a former member of our Board of Directors, Don witnessed firsthand the Community Foundation’s diligent stewardship of donor’s philanthropic wishes.

Don and Mary designated the majority of their gift to go toward specific causes they cared about: horticulture, arts, and youth. As an endowed bequest, the value of their \$15 million gift is preserved while each year a portion\* is distributed to support their designated causes.

## Greater BEAUTY — Donald R. and Mary E. Williams Horticulture Fund

Mary Williams had a lifelong love of horticulture, a heart for volunteering, and a passion for beautifying the community. Her greatest love was working in the garden. When she wasn’t tending to her own oriental and flower

gardens, Mary could often be found at the NW Native Plant Garden in Point Defiance, which she helped maintain alongside other Tacoma Garden Club members.

To honor Mary’s intentions for the horticulture fund established through her will, the Community Foundation worked with a volunteer committee to select grantees. The first of many significant grants awarded from the fund went to:

- **Tacoma Garden Club:** A grant to reestablish a cohesive meadow in the NW Native Plant Garden at Point Defiance Park. In addition to the meadow redesign, the project includes expanding the educational experience for visitors, highlighting the role featured species play in the local ecosystem.
- **Lakewold Gardens:** A grant to redesign and renovate a 10,000 square foot area at the entrance of the Garden, to be known as the Don and Mary Williams Garden Room.
- **WW Seymour Conservatory at Wright Park:** A grant to transition from an outdated manual environmental control system for the conservatory to a more efficient automated heating and ventilation system.



*\*Grantmaking distributions are currently calculated at 4.3% of the sixteen-quarter rolling average market value for permanently endowed funds.*

“MARY’S LOVE AND COMMITMENT TO THIS UNIQUE PLACE WILL FOREVER BE REMEMBERED IN A SPECIAL WAY WITH THIS GENEROUS GIFT.” - BARB DALTON, NORTHWEST

NATIVE PLANT GARDEN CHAIR, THE TACOMA GARDEN CLUB

## Greater UNDERSTANDING — Donald R. and Mary E. Williams Art Fund

Don and Mary’s home was filled with art and oriental antiques bought during their travels in Japan. To honor their legacy and interests, the first gift awarded from their Art Fund was a three-year grant to support a new public art sculpture for the Japanese Language School Memorial project.

An important community gathering place prior to World War II, the Japanese Language School taught culture and language to Japanese American children. Located downtown, it was once a thriving community, yet few Japanese Americans returned after being sent to internment camps during WWII.

Renowned artist Gerard Tsutakawa, best known for his iconic ‘Mitt’ sculpture at Safeco Field, will create the sculpture. It will reside

along the Prairie Line Trail on the University of Washington Tacoma campus, where the Japanese Language School once stood.



“This project memorializes an important part of our community’s history and supports the university that both Don and Mary attended.”  
– Rose Lincoln Hamilton.

*It’s been a privilege to honor the legacy of Don and Mary Williams by supporting projects that align with their passions and make a significant difference in our community.*

## A CHARITABLE BEQUEST COULD BE THE MOST IMPORTANT GIFT YOU EVER MAKE

Including a charitable gift in your estate plan is a simple way to give without affecting your financial security. You can either specify a dollar amount, a particular asset, or a percentage of your estate.

In Pierce County, many community leaders have publicly shared their intent to leave 10% of their estate back to charitable organizations as part of Leave 10. The Leave 10 campaign is building stronger communities by transforming as many people as possible into philanthropists.

**What is an Endowment?** An endowment ensures your generosity and vision will have

an impact that extends far beyond your lifetime. When you endow a fund in your will at the Community Foundation, you’re in fact creating a permanent legacy that will never stop giving. Endowments established decades ago are still sustaining our community today.

**How it Works.** We preserve the value of your gift while each year giving out a portion in charitable distributions to causes you care about. Go ahead and support the arts, protect the environment, feed hungry families—or let us decide how best to use your gift. It’s your choice. Our knowledgeable staff will ensure that grants from your fund continue to meet the challenges that face future generations.



# Greater EMPOWERMENT

In a strong community, a multitude of overlapping ties motivates residents to work together for change. People are aware of how much they have to offer and want to give back because they have been empowered by the community with the skills to succeed.

## Greater SUPPORT

As a girl grows up, the support of positive relationships with friends and adult role models strengthens her self-worth and capacity for self-expression. Many young women in Pierce County who are court-involved have grown up without these crucial relationships, leaving them disempowered within the community. Fortunately there is still hope for these young women to realize how much they can achieve and how valuable they—**Arts Connect** illustrates this every day.

Part of Hilltop Artists in Residence, Arts Connect is a tuition-free probation and diversion program for girls and young women ages 11 to 19. The curriculum focuses on artistic self-expression and teamwork and helps foster the necessary relationships for the young women to be confident, healthy and engaged community members.

Each class, participants tell their stories through ceramics, glasswork, photography, and printmaking. They then work together as a group to develop an art-based project to serve their neighborhood. This positive atmosphere, which fosters clear communication and problem-solving, is the result of a joint effort between probation officers, volunteers, teaching artists, and program staff.

It is the relationships young women develop in the program—forming something of a family—that may have the greatest impact on their ability to make healthy choices. Executive Director, Kit Evans shares, “Many girls cite Arts Connect as the first time

they’ve trusted another girl enough to call her a friend or thought of law enforcement as allies and role models.”

Young women become accountable to the group, adults and peers alike, so that they have more incentive to take responsibility for their decisions outside the program. They come to care about the group and about their place in it, setting the precedent for a more engaged and connected presence in their school and neighborhood communities.

This sense of belonging has proven a powerful influence—latest participant data shows 81.5% of girls in the program staying out of further court involvement at 12 months. Furthermore, family members often cite improved school attendance, and greater trustworthiness and confidence on the part of girls who go through the program. With the help of Arts Connect, these girls learn the skills they need to thrive as individuals and as members of the wider community.

*The Fund for Women and Girls and the Youth Philanthropy Board of the Community Foundation both support programs that empower people to have confidence in their own abilities by providing the tools for self-sufficiency and healthy choices. These programs build important relationships and the inter-personal skills to further strengthen the social fabric of the community.*



## Greater FREEDOM

Visible and invisible battlefield wounds keep many soldiers from reaching self-sufficiency on the home front. **Rainier Therapeutic Riding** addresses this need by providing essential healing in the form of equine therapy.

Located in a county with one of the largest military bases in the U.S., Rainier Therapeutic is a key partner to the surrounding population. Joint Base Lewis-McChord supports more than 40,000 service members and nearly 30,000 military retirees; its Warrior Transition Battalion refers 85% of riders enrolled in the therapeutic horsemanship program.

The equine therapy program at Rainier Therapeutic provides what in some cases is a life-saving community of healing for service members with PTSD or other combat wounds, such as traumatic brain injury. Horses naturally mirror and reflect the emotional state of the riders and require them to



focus on trusting relationships, self-assurance, and physical mobility. Through this, the horsemanship program equips service members with the confidence to reach personal goals and achieve independence.

Many participants develop a deep bond with their individual horses. One veteran, who calls Rainier Therapeutic his “safe place,” shares, “[my] horse saved me from suicide.”

At the core of the program, Rainier Therapeutic offers group-based therapeutic horsemanship classes serving up to 80 active and veteran service members per week, tuition-free. Executive Director Elisia Mutter describes how the program attracts a community of service members from all branches of the military whose “common bond is their love for and service to our country.”

Well integrated into the community, Rainier Therapeutic also offers programs for military families and incorporates more than 75 dedicated volunteers of all ages and military backgrounds. The program maintains an active presence on Facebook, where stories and photos of horses and the service members riding them are a window into the healing process for families of participants.

*Support from the Community Foundation helped Rainier Therapeutic Riding provide equine therapy services in 2013.*

Meet program participants and learn more at: [gtcf.org/Rainier](http://gtcf.org/Rainier)



# Greater REACH

The Community Foundation believes in the power of people—to work collectively and draw on our individual strengths and assets to understand issues, make recommendations, and take action. Providing flexible fund options is just one of the ways we help support the community.

Jim Walton, Col. Willie Stewart, and Patricia “Pat” Talton are among the community leaders that came together to start the TUL Legacy Fund. Held at The Greater Tacoma Community Foundation, the Fund aims to support the African American community through the work of the Tacoma Urban League.

“The Tacoma Urban League is a community-based nonprofit, historically one of the anchor institutions helping to uplift African Americans,” shares Pat Talton.



Jim Walton

Of the decision to set up the Fund, Jim Walton explains, “We realized that we would be more helpful and more impactful if we were to join in our efforts and pool our money to reinvest” and support the Urban League’s work.

The TUL Legacy Fund provides the platform for people with this shared cause and goal to give in a thoughtful, focused way.

“I WAS RAISED IN A CULTURE BASED ON SHARING AND SUPPORT, AT A TIME WHEN THE COMMUNITY TOOK RESPONSIBILITY FOR YOU.”

– JAMES “JIM” WALTON

Since 2010, the Fund has successfully grown, in large part from donations between \$100 and \$500. Last year, an advisory group of the Fund recommended a grant to help the Tacoma Urban League build its internal operations and capacity to continue its mission of service.



Pat Talton

“Working with the Community Foundation is one of the best things that we could have done,” shares Pat.

“It was a ready-made resource for us. We didn’t have to spend a lot of time structuring an organization around our efforts; we could focus on trying to raise money rather than the infrastructure,” adds Jim.

The TUL Legacy Fund donors continue to foster the culture of sharing and support they grew up with.



Willie Stewart

“I would challenge anyone to recognize their responsibility to give of what they have. As Winston Churchill said, ‘We make a life by what we earn. We truly have a life by what we give,’” says Willie.

Hear the story of the TUL Legacy Fund at: [gtcf.org/LegacyFund](http://gtcf.org/LegacyFund)

# Greater RECOGNITION

Once the site of a Puyallup tribal village, Tollefson Plaza in downtown Tacoma now houses a 20-foot cedar figure, arms open in welcome. The man responsible for this monument and the winner of our **2013 Foundation of Art Award, Shaun Peterson** continues to bridge the past and the future with his work.



As the award winner, Shaun, whose tribal name is Qwalsius, created an intricate artwork entitled *Between Wolf and Moon*. The piece is based on a mythological Puyallup tribal story about a son, Dokwibalth, who is born from the union of a human woman and the red star. Shaun explains:

*“After spending much time with his mother’s people Dokwibalth decided it was time to go up to the sky world. Before his journey back (to become the moon), Dokwibalth met with the Chief of the Wolf People who promised that his people would look after the Puyallup... When the moon returns to the sky each night, the wolf communicates what the people have been doing through his song.”*

Symbolizing the connection between sky and earth, Shaun carved a smooth, round red cedar base around which he wrapped hand-braided rope. Nestled between two wolves sits a serene, watchful moon carved in pale cedar.



“I hope that people are interested to learn more about the stories behind the pieces themselves,” shares Shaun.

## ABOUT SHAUN PETERSON



A pivotal figure in the revival of Coast Salish art traditions since 1996, Shaun Peterson is a member of the Puyallup tribe. His early work in printmaking, painting, and wood sculpture has evolved into mixed media with traditional

western red and yellow cedar and modern elements of aluminum and steel. Today, Shaun continues to explore the future possibilities of the Coast Salish art tradition and believes in combining the regional art styles in the Pacific Northwest with contemporary materials and methods. His art is displayed in public collections around the world. Learn more at: [qwalsius.com](http://qwalsius.com).

## ABOUT THE FOUNDATION OF ART AWARD

In 2008, the Community Foundation established the Foundation of Art Award to recognize the essential role art plays in our community and to honor professional artists in the region. Today, this Award has become one of the most notable in the region and is made possible by the Donald R. and Mary E. Williams Art Fund.

Each year, more than a dozen artists are nominated and one is selected to create a commissioned piece representing their interpretation of the community.

View each of the nominated artists’ work on our online Foundation of Art Gallery at: [gtcf.org/art](http://gtcf.org/art)



# Greater GIVING

We enhance the experience and impact of giving.

The Greater Tacoma Community Foundation is your community foundation, committed to strengthening the future of our region. As a local nonprofit, we provide donors a simple, powerful and highly personal approach to giving, so their gifts do good work within the community, forever.

We take our responsibility seriously to be good stewards of the community assets and donor funds entrusted to us. Since our creation in 1981, we have grown to include more than 450 charitable funds established by individuals, families, organizations, and businesses. Through the generosity of people past and present who set up funds with us, we are able to make grants to support a wide range of causes that are vital to the well-being of our communities.

## COMMUNITY FOUNDATION DONORS GIVE TO MANY GREAT CAUSES



Arts & Culture



Environment



Education



Human Services



Community Development

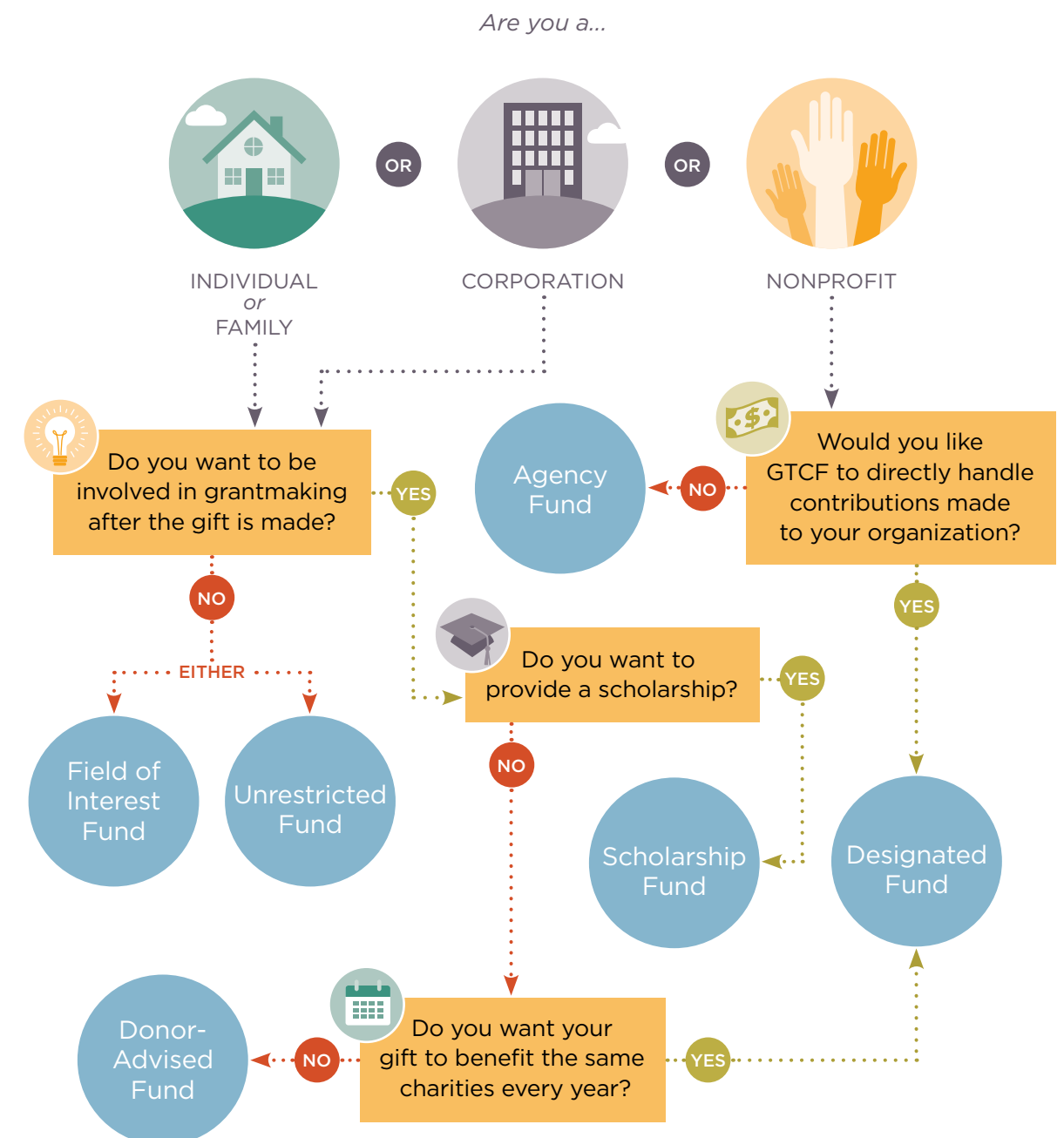
## 10 REASONS PEOPLE GIVE THROUGH OUR FOUNDATION

- 1 We are a local organization with deep roots in the community.
- 2 We have broad expertise on community issues and needs.
- 3 We provide highly personalized service tailored to each individual's charitable and financial interests.
- 4 Our funds help people invest in the causes they care about most.
- 5 We accept a wide variety of assets, and can facilitate even the most complex forms of giving.
- 6 We partner with professional advisors to create highly effective approaches to charitable giving.
- 7 We offer maximum tax advantage for most gifts under state and federal law.
- 8 We multiply the impact of gift dollars by pooling them with other gifts and grants.
- 9 We build endowment funds that benefit the community forever and help create personal legacies.
- 10 We are a collaborative community leader, coordinating resources to create positive change.

# Greater FLEXIBILITY

Establishing a fund is a quick, easy and effective way to invest in the future of the community. There are many reasons to start a fund and many flexible fund options to choose from.

## FIND YOUR FUND





# Greater COMMUNITY

A look at the remarkable people and events that made 2013 one of our best years yet.



▲ 80 youth and adults celebrate the second year of the **Youth Philanthropy Board (YPB)** and welcome a new group of leaders to the YPB. Over the year, YPB members volunteer 1,000 hours and recommend \$75,000 in grants.



▲ 100 people gather for the opening reception of the **Foundation of Art Award exhibit**, a culminating show featuring 40 nominees and winners from the past five years.

Professional advisors and their clients enjoy an educational and entertaining evening at our third annual **Wine & Wisdom**, featuring a keynote address on charitable gift planning.



The Fund for Women & Girls (FFW&G), in partnership with Women's Funding Alliance, kicks off the **Action! Cinema film series** to a sell-out crowd.



◀ The Community Foundation awards the first of many extraordinary grants from the Donald and Mary Williams Art and Horticulture Funds to renovate local gardens and support a **new public art project**.



◀ 550 people celebrate women and girls at the FFW&G **Power of the Purse luncheon**. The amazing event raised nearly \$86,000.



Fundholders and donors enjoy a Valentine's Day breakfast and report out on the Community Foundation's **annual investment performance**.



◀ A second cohort of nonprofits joins the **Youth Program Quality Initiative**—a partnership between Raikes Foundation, Schools Out Washington and the Community Foundation to enhance the quality of youth programs.



▲ **Spark Grants** launch to support individuals and small groups in making positive change in their neighborhoods. Six projects received funding to put their great idea into action.

A \$1.5 million **impact investing program** is introduced to spur economic development in Pierce County.

200+ people join in our interactive **Grants Reception**, designed to showcase the many people and organizations working to spark positive change in our community.



◀ Donors and fundholders enjoy an evening of thanks for their partnership over the past year at our **Summer Celebration**.



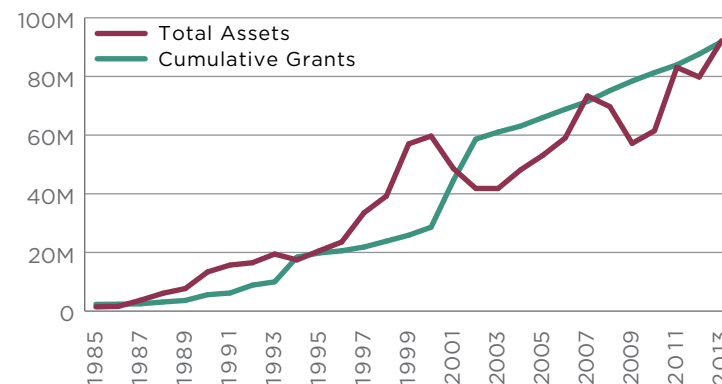
# Greater IMPACT

The Community Foundation employs a diversified growth strategy for its endowment portfolio. The goal is to generate a long-term rate of return sufficient to offset inflation, administrative and management fees, plus regular grantmaking distributions. Grantmaking distributions are currently calculated at 4.3% of the sixteen-quarter rolling average market value for permanently endowed funds.

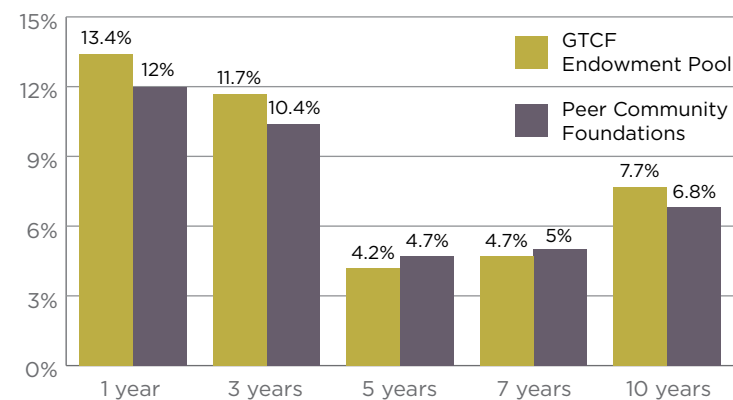
Our investment model is based on modern portfolio theory and employs strategically diversified asset allocation. Our endowed funds are pooled to provide investment management economies of scale and to access investment vehicles that are unavailable to smaller individual funds.

Our Investment Committee is comprised of experienced professionals with extensive backgrounds in investment and finance. The Committee adheres to disciplined decision-making processes, guided by our Investment Policy Statement.

## TOTAL ASSETS & CUMULATIVE GRANTS



## COMPARATIVE INVESTMENT RETURNS\*



\* As of 6/30/13

## INVESTMENT COMMITTEE

John Wiborg, President, Stellar Industrial Supply, Inc., *Chair*  
 Brad Cheney, President, Ben B. Cheney Foundation  
 Debra Friedman, Chancellor, University of Washington, Tacoma  
 John James, Consultant  
 Douglas Lineberry, Attorney, Fiduciary Counselling, Inc.  
 Kathryn F. McAuley, Vice President, Weyerhaeuser  
 Steven M. Murray, PhD, Russell Investment Group  
 Doug Van Allen, Jefferson County Community Foundation

## INVESTMENT ADVISOR

The Community Foundation employs Fund Evaluation Group as its investment consultant. Fund Evaluation Group advises on assets of \$36 billion.

## INDEPENDENT AUDITOR

Dwyer, Pemberton & Coulson, P.C.  
 Our Audited Financial Statements are available on our website at [www.gtcf.org](http://www.gtcf.org). Our Form 990 is available upon request.

## BY THE NUMBERS

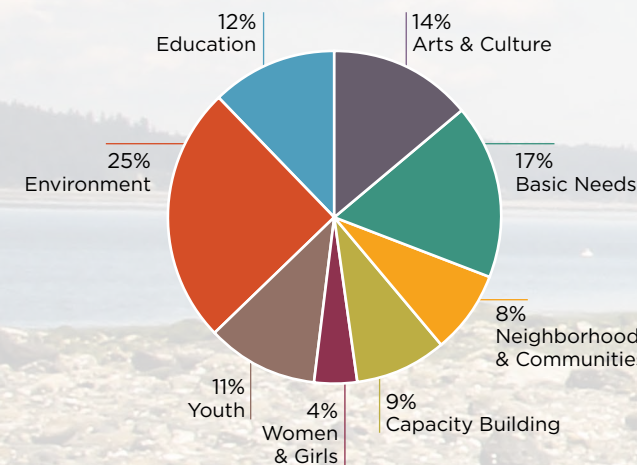
### TOTAL GRANTS

Donor-Directed	\$ 2,899,995	69%
Foundation-Directed	\$ 1,308,351	31%
<b>Total</b>	<b>\$ 4,208,346</b>	<b>100%</b>

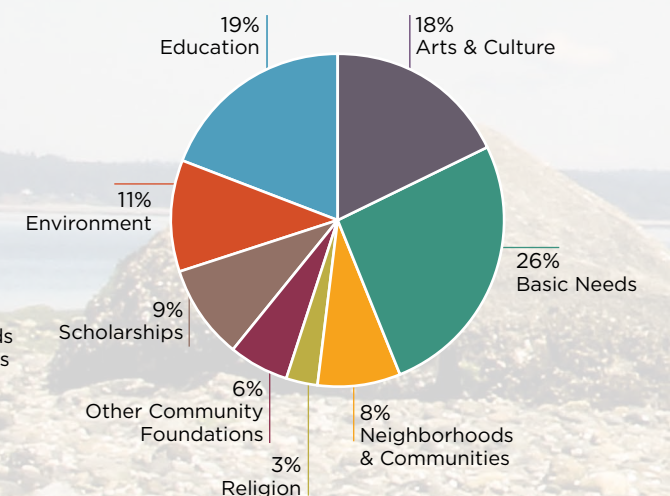
*We're proud to support our non-profit grantees in their work to make our community even better.*

Review the list of this year's grantees at: [gtcf.org/annual-report](http://gtcf.org/annual-report)

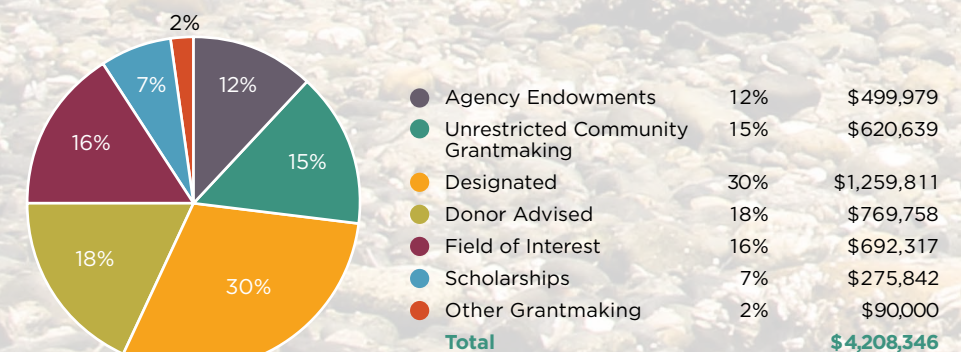
### FOUNDATION-DIRECTED GRANTS\*\*



### DONOR-DIRECTED GRANTS



### GRANTS DISTRIBUTED BY FUND TYPE



\*\* Includes Unrestricted Community Grantmaking and Field of Interest Funds



# DONOR LIST

## FOUNDING DONORS

A Founding Donor is any bank, business, charitable organization, foundation or individual who made a gift of \$25,000 or more toward the Unrestricted or Administrative Endowment Funds during the Community Foundation's first decade.

Elbert Baker II  
Ben B. Cheney Foundation  
Norton Clapp  
Elmer H. Davis  
George L. Davis Jr.  
Mary Kathryn Ellis  
Forest Foundation  
Gensco, Inc.  
Junior League of Tacoma  
G.E. Karlen  
Elizabeth B. Kelley  
W. Howarth Meadowcroft  
Bernard S. Miller  
Edward P. Miller Foundation  
Sue D. Nilsson  
James R. Paulson  
Puget Sound Bank  
Cleve A. Redig  
The Seattle Foundation  
– Rogers Fund  
Marjorie Stansfield  
Univar Foundation  
Mr. & Mrs. George H. Weyerhaeuser  
Robert B. Jr. & Helen C. Whitney  
Ann Wiborg

## GIFTS TO FRIENDS OF THE FOUNDATION

Chance Addison  
Gina Anstey  
The George and Dorothy Babare Family Fund of GTCF  
The Bamford Foundation  
John and Sally Barline  
Bill and Peggy Barton  
Karen Bellamy  
Bingham-Pahl Family Fund of GTCF  
Dr. Jan F. Brazzell and Wolfgang Opitz  
Barry and Shirley Brockmann  
Gary and Stephanie Brooks, Jr.  
Marydale Brooks  
Dr. James and Ann Brown  
Elizabeth E. Brusco  
Sharon and Robert Camner  
Julie Cantrell  
Rick and Francie Carr  
Holy H. Chea  
Piper Cheney and Matt Beckingham  
John and Sharon Ciccarelli  
T. Gary and Diane Connett  
Ann and Peter Darling Fund of GTCF  
Richard and Clare DeVine  
Eulalie Fisher  
Bill and Anne Frame  
Debra Friedman, PhD  
Fund Evaluation Group  
Andrea Gernon  
Thelma Gilmur  
Joe Gordon  
Grogan Family Fund of GTCF  
Rose Lincoln Hamilton and Gordon Hamilton  
Dr. C. Stevens and Cynthia E. Hammer  
Hayes Family Fund of GTCF  
James R. Henderson  
Christine Hewitson  
Sandy and Steve Hill Family Fund of GTCF  
John and Carole Holmaas  
Andy and Bill Holt  
Kim and Kevin Hunter  
Maro Imirzian  
John and Suzanne James  
Laurie Jenkins and Laura Wulf  
Bertil and Nancy Johnson  
Alice and Paul Kaltinick

Kampbell, Andrews & Arbenz, PLLC  
Sherrana and Kevin Kildun  
John and Lisa Korsmo  
Jim Laurent, PhD  
Amy and David Lewis  
Scott Limoli and Wendy Welch  
Mary Long  
Lamont C. Loo  
Dave Martin  
Joe and Gloria Mayer Fund of GTCF  
Pam Mayer  
Kathryn F. McAuley  
Jean McCord  
Keith D. McGoffin  
David and Jeanne McGoldrick  
Claire Mendenhall  
Mercer Family Foundation  
Kristina and Steven Murray, PhD  
Susan and Darron Nelson  
Jackie and Hans Ostrom  
Stanley and Sharon Palmer  
Bridget Parke  
Carla and Bill Pelster  
Beth and Wade Perrow  
Bob and Diane Pittman  
Jeff and Amanda Pritchard  
Elyse and Kenny Rowe  
Rust Building – Tacoma LLC dba Commerce Building  
Joseph and Kathryn Scorcio  
Katharine and Gary Severson  
James and Phyllis Shoemake  
Lloyd Silver Fund of GTCF  
Todd and Teresa Silver  
Elaine Stafford  
Ronald and Carol Stockdale  
Joanne and Terry Stone  
Patricia Talton  
Barbara and Greg Tanbara  
Thomas Taylor  
Cindy Thompson  
Fred and Dorothy Tobiason  
Sheri and Jeffrey Tonn  
Tim and Barbara Tucci  
United Way of Pierce County  
Tom and Roberta Valentine  
Vandenberg, Johnson & Gandara, LLP  
Judy and Cordy Wagner  
Hayli Walker  
James Walton

Mia Navarro Wells  
Audrey and John West  
John and Lesa Wiborg  
John and Lesa Wiborg  
Endowment Fund of GTCF  
Herman and Lila Widemann  
Nancy E. Wittenberg  
Richard Woo and Arlene Joe  
Wurlitzer Manor Music & Arts Fund of GTCF  
Hsushi Yeh

## GIFTS OF \$1,000 OR MORE TO NEW OR EXISTING FUNDS

Anderson Futures, LP  
Brian Arbogast and Valerie Tarico  
Lea Armstrong  
The George and Dorothy Babare Family Fund of GTCF  
Baker Family Fund of GTCF  
The Bamford Foundation  
Bancroft-Clair Foundation  
Daniel Barkley  
Bill and Peggy Barton  
Sharon Cummings Beck  
Lee Belas International Scholarship Foundation  
Karen Bellamy  
Pamela Bendich  
Bethel Educational Scholarship Team  
Bingham-Pahl Family Fund of GTCF  
Charles W. Bingham  
Debbie Bingham\*  
Angel Blanford  
Blossom Benefit\*  
Cappri A. Boitano\*  
Theresa M. Boyle  
Marydale Brooks  
Cascade Eye and Skin Centers, P.C.  
Ben B. Cheney Foundation  
City of Tacoma  
William H. Clapp  
Ronald L. Coleman  
Columbia Bank  
The Community Foundation for the National Capital Region  
Concrete Technology Corporation  
Linda Crate  
Sean Crowley

Betty Daheim  
Sandra Daheim  
Ann and Peter Darling  
Tina De Falco\*  
Jill Duffy DeGoede and Ben DeGoede  
Todd Donato  
Andrea Duffy  
Dr. James and Susanne Duffy  
Kevin Duffy  
Patrick and Karen Duffy  
Steve Duffy  
Dwyer Pemberton & Coulson, P.C.  
Gene Elliott  
Emmanuel Lutheran Church  
Tom Faubion  
Financial Insights, Inc.  
Harold R. and Jessie B. Flowers  
Endowment Fund of GTCF  
Franciscan Foundation  
Franciscan Health System  
Friends of Lakewold  
Aurel A. Fries Fund of GTCF  
Gottfried and Mary Fuchs Foundation  
J. James and Margel Gallagher  
Bill & Melinda Gates Foundation  
Gensco, Inc. Fund of GTCF  
David and Patricia Giuliani Family Foundation  
Graham Kapowsin Dollars for Scholars Community Foundation  
Gray Lumber Company  
Grogan Family Fund of GTCF  
Ed and Kathy Grogan  
Susan Russell Hall and Dale Hall  
Dr. C. Stevens and Cynthia E. Hammer  
Harmon Brewing Co. LLC  
James and Enid Harris  
The William H. & Mattie Wattis Harris Foundation  
Hayes Family Fund of GTCF  
Judge Frederick B. Hayes  
David T. Hellyer and Constance H. Hellyer Charitable Remainder Unitrust Fund of GTCF  
Sandy & Steve Hill Family Fund of the GTCF  
William and Elizabeth Hyde  
Endowment Fund of GTCF  
Maro Imirzian

Jefferson County Community Foundation  
Johnson Stone & Pagano, P.S.  
JP Morgan Chase & Co.  
Junior League of Tacoma Fund of GTCF  
Eileen and James Kelley  
Sara Kendall  
Key Peninsula Civic Center Association  
KeyBank  
KeyBank Foundation  
Florence B. Kilworth Foundation  
Kathleen Koch  
John and Lisa Korsmo  
Ottie and Clara Ladd  
Lakewood Center Fund of GTCF  
Lifetouch National School Studios  
Loeb Charitable Foundation  
George and Mary Long Fund of GTCF  
Mary Long\*  
Lita and Paul Luvera  
Madigan Foundation  
Charles N. Matejka Fund of GTCF  
The Estate of Charles Matejka  
Steven Maxwell  
Joe and Gloria Mayer  
Joe and Gloria Mayer Fund of GTCF  
David and Jeanne McGoldrick  
W. Howarth Meadowcroft  
Rick A. Meeder and Susan J. Barrett  
Metro Parks Tacoma  
Microsoft Corporation  
Gary E. Milgard Family Foundation  
Edward P. and Juanita J. Miller Fund of GTCF  
Grace M. and Bernard S. Miller Community Fund of GTCF  
Nate Mocer  
Claire K. Morris Charitable Fund of GTCF  
Multicare Health Systems  
L. T. Murray III  
L.T. Murray Family Foundation  
L. T. Murray Jr.  
Andrew and Eva Nelson Fund of GTCF  
Maurice I. Nelson  
Sue D. Nilsson Endowment Fund of GTCF

Sue D. Nilsson Unrestricted Endowment Fund of GTCF  
One Nation  
Pacific Lutheran University  
Lloyd R. and La Verne P. Paff Charitable Gift Annuity Fund of GTCF  
Palmer Scholars  
Stanley and Sharon Palmer  
Panagiotu Pension Advisors, Inc.  
PCMS Foundation  
Carla and Bill Pelster  
Beth and Wade Perrow  
Glenn and Janice Perry  
James W. and Frances C. Petersen Fund of GTCF  
Pierce County  
Pierce County Community & Technical Colleges  
Pierce County Housing Authority  
Pierce County Library Foundation  
Betty Pinkerton  
Point Defiance Zoological Society  
Puget Sound Bank Fund of GTCF  
Puyallup Tribe of Indians  
Timothy D. Quigg  
Quil Ceda Village  
Raikes Foundation  
Dr. Jerry and Elaine Ramsey  
Reeder Management Inc.  
David E. Rietmann  
Kjell Inge Rokke  
The Estate of Pearl Rose  
Richard R. Rose  
Russell Family Foundation  
Ryan, Jorgenson & Limoli, P.S.  
Robert M. Ryan CPA  
Merrill Ryman  
Safe Streets Campaign  
Safeco Corporation  
The Seattle Foundation  
Sequoia Foundation  
Katharine and Gary Severson  
James and Phyllis Shoemake  
Patricia Shuman and Dave Edwards  
Lloyd Silver Fund of GTCF  
Lloyd and Carroll Silver  
Todd and Teresa Silver  
Orin C. Smith  
Spark Charitable Foundation  
Kirk and Janie Starr

Steilacoom Historical Museum Association  
Col. Willie and Faye Stewart  
Ronald and Carol Stockdale  
Doris G. Stucke  
TACID  
Tacoma Alumni Chapter of Mu Phi Epsilon  
The Tacoma Nature Center  
Tacoma Wheelmen's Club  
Thomas Taylor  
Cindy Thompson  
Thompson Family Foundation  
Thurston Co. League of Womens Voters  
The Tides Tavern  
The TJX Foundation  
Fred L. and Dorothy Tobiason  
Sheri and Jeffrey Tonn  
Totem Ocean Trailer Express, Inc.  
Tucci Family Endowment Fund of GTCF  
Umpqua Bank  
United Way of Pierce County  
Univar Foundation Fund of GTCF  
David and Vijaya Vance  
Verizon  
James Walton  
Frederick and Sulja Warnick  
Jack and Lilly Warnick  
Agnes J. Waterhouse  
Endowment Fund of GTCF  
Joan D. Watt  
Whatcom County Community Foundation  
John and Lesa Wiborg  
Carol Williams  
Donald R. and Mary E. Williams Arts Fund of GTCF  
Donald R. and Mary E. Williams Youth Fund of GTCF  
Donald R. and Mary E. Williams Unrestricted Fund of GTCF  
The Estate of Mary Williams  
Nancy E. Wittenberg  
Woodworth Family Foundation  
WPC  
Hsushi Yeh  
YMCA of Pierce and Kitsap Counties

*\* Fund for Women & Girls Dreamweaver*



# VOLUNTEER LIST

The Greater Tacoma Community Foundation and its volunteers bring diverse perspectives and experiences to enhance and deepen the effectiveness and impact of the work we do together. The Community Foundation's volunteers engage, uphold and leverage the talents of our community as we address regional issues and drive solutions.

## AUDIT COMMITTEE

W. Michael McCrabb, *Chair*  
Terry Stone  
Timothy Tucci  
Liane Williams

## BOARD OF DIRECTORS

T. Gary Connett, *Chair*  
Gary A. Brooks Jr.  
Debra Friedman, PhD  
Ed Grogan  
Maro Imirzian  
Laurie Jinkins  
John Korsmo Jr.  
Joe Mayer  
Carla Pelster  
Katharine Severson  
Patricia Talton  
Cindy Thompson  
Sheri Tonn, PhD  
Timothy Tucci  
John Wiborg

## DEVELOPMENT COMMITTEE

Ed Grogan, *Chair*  
Peter Darling  
Jon Flora  
John Korsmo Jr.  
Joe Mayer  
Carla Pelster  
Beth Perrow  
Katharine Severson

## EXECUTIVE COMMITTEE

T. Gary Connett, *Chair*  
Ed Grogan  
Katharine Severson  
Patricia Talton  
Sheri Tonn, PhD  
John Wiborg

## FINANCE COMMITTEE

Timothy Tucci, *Chair*  
Al Bacon  
Stephen Gray  
Sherlyn Iverson  
Laurie Jinkins  
John Korsmo Jr.  
Terry Stone  
Tom Taylor

## FOUNDATION OF ART COMMITTEE

Katy Evans  
Rock Hushka  
Jeremy Mangan  
Amy McBride  
Jim McDonald  
Katharine Severson

## FUND FOR WOMEN & GIRLS ADVISORY BOARD

Maralise Hood Quan, *Chair*  
Pam Barber  
Debbie Bingham  
Lisa Copp  
Melannie Denise Cunningham  
Kerri Feider  
Kelly Goodsell  
Allyson Griffith  
Rebecca Hogan  
Bobbi Hughes  
Joan Lorenz  
Elinor Ottey  
Joanne Stone

## IMPACT INVESTMENT TASK FORCE

Sheri Tonn, PhD, *Chair*  
Conor Boyd  
Gary A. Brooks Jr.  
Debra Friedman, PhD  
Maro Imirzian  
Steven Murray, PhD  
Hal Russell

## INVESTMENT COMMITTEE

John Wiborg, *Chair*  
Brad Cheney  
Debra Friedman, PhD  
John James  
Douglas Lineberry  
Kathryn McAuley  
Steven Murray, PhD  
Doug Van Allen

## NOMINATIONS & GOVERNANCE COMMITTEE

Joe Mayer, *Chair*  
T. Gary Connett  
Peter Darling  
Maro Imirzian  
Carla Pelster  
Katharine Severson  
Cindy Thompson  
John Wiborg

## PROFESSIONAL ADVISORS COMMITTEE

Kerry Brink, *Chair*  
Bradley Berger  
Anita Eixenberger  
Ed Grogan  
Allyn Hughes  
Sherlyn Iverson  
Brienne Kampbell  
Frank Laise  
Scott Limoli  
Lamont Loo  
Linda Lysne  
Jean McCord  
Robert Pentimonti  
Rebecca Stay

## REAL ESTATE COMMITTEE

John Holmaas, *Chair*  
Mark Hood  
Terry Lee  
Ronald Lunceford

## SPARK GRANTS COMMITTEE

Sonjalyn Chandler  
Minh-Anh Hodge  
Danay Jones  
Eileen Kelley  
Carla Pelster  
Antonio Sablan  
Mark Williams

## VIBRANT COMMUNITY DISTRIBUTION COMMITTEE

Katharine Severson, *Chair*  
Cameron Bennett  
Conor Boyd  
Gary A. Brooks Jr.  
Charlie Brown  
Darryl Crews  
Timmie Foster  
Julia Garnett  
Dale Hall  
Gordon Hamilton  
Erik Hanberg  
John Holmaas  
Andrea Holt  
Dean Kelly  
Mari Kvinsland  
John Lantz  
Edwina Magrum  
Jennifer Nino

Gayle Peach  
Jessica Stokesberry  
Cindy Thompson  
Steve Thorndill  
Sheri Tonn, PhD  
Mia Navarro Wells

## YOUTH PHILANTHROPY BOARD

Kenya Adams  
Vigo Beninger  
Marina Carrillo  
Darryl Crews  
Laura Dela Cruz  
Ruby Dela Cruz  
Clarissa Escalante  
Curtis Escalante  
Raphael Hartman  
Jordan Henderson  
Jonathan Jackson  
T'Keiyah Marrero  
Angelica Maria Martinez Estrada  
Lydia Nasser  
Bianca Penuelas  
Eslie Penuelas  
Imari Romeo  
Antonio Sablan  
Tiffany Sanders  
Ashley Solus  
ShaLuJuan Williams  
Taylor Yi

WE ARE THANKFUL  
AND PROUD TO WORK  
WITH MORE THAN 100  
VOLUNTEERS COMMITTED  
TO VARIOUS ASPECTS OF  
OUR WORK.

# CORPORATE SPONSORS



**JAYRAY A PLACE TO THINK**  
Branding | Advertising | Strategic Communications



## FUND FOR WOMEN & GIRLS SPONSORS



Photography by Jesse Michener, Duncan Price, Mick Flaaen, Kumiko Sakai and Anthony Duenas.



