

Administrative Fee Schedule

Effective 1/1/2021

Administrative fees support the operational costs to administer the fund and the philanthropic advising that enable your charitable gifts to achieve their greatest impact. Fees also support GTCF in its role as a catalyst, connector, and knowledge hub to advance a thriving Pierce County, now and into the future.

FUND TYPES AND ANNUAL FEES

DONOR ADVISED FUNDS

On the first \$500,000	1.25%
On the next \$500,000	0.75%
On the next \$4,000,000	0.50%
Balance over \$5,000,000	0.25%
Minimum Annual Fee:	\$150

SCHOLARSHIP FUNDS

On the first \$500,000	2.00%
Balance over \$500,000	0.40%
Minimum Annual Fee:	\$250

AGENCY FUNDS

On the first \$500,000	1.00%
On the next \$500,000	0.50%
On the next \$2,000,000	0.25%
Balance over \$3,000,000	0.10%
Minimum Annual Fee:	\$150

The fees listed here are provided as a guideline. In the case of extraordinary service level requirements, funds may be charged fees that differ from this schedule.

- Administrative fees are charged quarterly (1/4 of the annual fee deducted each quarter).
- Investment fees are charged quarterly by investment managers and are in addition to the administrative fees stated here.
- For endowed funds, fees are based on the average market value over the previous sixteen quarters. For non-endowed funds, fees are based on the market value at the end of the previous quarter.

DESIGNATED FUNDS

On Funds less than 1M	1.75%
On Funds started with 1M+	
• On the first \$2,000,000	1.00%
• Balance over \$2,000,000	.25%
Minimum Annual Fee:	\$150

FIELD OF INTEREST FUNDS

2.00% or as negotiated
Minimum Annual Fee: \$150

UNRESTRICTED FUNDS

On any balance	2.00%
Minimum Annual Fee:	\$150

CHARITABLE REMAINDER UNITRUSTS

On any balance	0.50%
----------------	-------

CHARITABLE GIFT ANNUITIES

On any balance	0.50%
----------------	-------

The fee is paid from the remainder interest upon receipt by GTCF.

SPECIAL INITIATIVE FUND

Negotiated Fee

For more information, please contact the GTCF Philanthropy Team at (253) 383-5622 or faservices@gctcf.

GTCF PHILANTHROPY TEAM

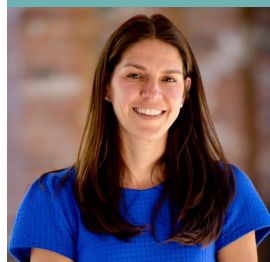


Robin Callan, CREF, CAP®

Vice President of
Philanthropic Services

Evelyn Ryberg, CAP®

Senior Director of
Philanthropic Services



Stacey Guadnola, CAP®

Director of Philanthropic
Engagement

Kiera Aussenhus

Philanthropic
Service Coordinator

