



2014 ANNUAL REPORT

33 YEARS OF IMPACT



Table of Contents

1 Letter From Our Leaders	11 Fostering Philanthropy
2-3 Expanding Learning	12-13 Expanding Giving
4 Increasing Opportunity	14-15 Celebrating Impact
5 Exploring Connection	16-17 By The Numbers
6-7 Expanding Reach	18-19 Donor List
8 Creating Community	20 Volunteer List
9 Preserving Your Legacy	21 Connect With Us and Corporate Sponsors
10 Growing Partnerships	



Dear Friends,

Thank you for helping make 2014 one of the most impactful in our 33-year history. It was a momentous year for The Greater Tacoma Community Foundation.

WE CELEBRATED REMARKABLE GENEROSITY AND GROWTH.

A decade ago, The Greater Tacoma Community Foundation had assets of \$48 million and awarded \$2 million in grants. As we have grown, so has the scale of our impact within the community.

This year, our assets surpassed **\$112 million**, and more importantly, our **grants and scholarships exceeded \$5.2 million**—an increase of 24 percent over 2013.

Collectively, these dollars are working to end homelessness, protect and preserve the environment, promote vibrant arts and culture, offer hope for youth and families, and much more.

It is the commitment of our generous donors, fundholders, and partners—past and present—that makes all this possible. We are honored to be their partner in giving and share a few of their stories in this year's report.

WE BUILT ON THE PAST AND SET THE STAGE FOR THE FUTURE.

2014 marks the centennial year of the community foundation movement. The field of community foundations is rapidly changing, as is the community we serve.

We at The Greater Tacoma Community Foundation understand the need to evolve in order to respond to our community. This year, our Board of Directors underwent an intensive business planning process and approved a plan that will guide our work in the years to come.

Informed by our many stakeholders, this plan focuses our work on **achieving philanthropic, community, and organizational impact**.

The sharpened strategies emphasize cultivating philanthropy, deepening our impact as a community partner, and strengthening our organizational excellence in order to improve the social fabric of the region.

In the coming years, we expect to work in new ways—deeper collaborations, focused community engagement, strategic grants, entrepreneurial impact investments, new tools and strategies for helping donors fulfill their goals, and more. The important constant that guides this work is the community and the unique role we have in taking both a long-term view and making an impact today.

It has been a privilege to work with people who make this an extraordinary place to live and work. As we move into our 34th year, exciting times are ahead. We thank you for joining us on this journey, and look forward to continuing our collective work to invest in the future of the region.



Rose Lincoln Hamilton
Rose Lincoln Hamilton
President & CEO



T. Gary Connett
T. Gary Connett
Past Board Chair



Ed Grogan
Ed Grogan
Board Chair-Elect



Philanthropic & Community IMPACT

Expanding Learning

The Community Foundation is committed to investing in the success of our community's youth. Their success not only affects them personally, but contributes to our region's quality of life.

To help youth succeed in school, life, and community, we have focused our efforts on expanded learning—the learning that takes place outside of the school day. With youth spending more time out of school than in school, there's tremendous opportunity to engage them in quality programs that promote learning, recreation, and enrichment.

These after-school and summer programs:

- Help youth **develop new skills** and pursue new opportunities
- Contribute to **improved academic performance**
- Help **eliminate risky behavior** such as drug use and gang activity
- Engage young people with adults who are **positive role models**
- Build social skills and promote **healthier choices**

A few of the ways we've invested in youth this past year:

SUMMER LEARNING GRANTS

We dedicated \$75,000 to a new Summer Learning Grants program to support organizations that provide engaging educational

summer activities. Research shows that much of the achievement gap between lower- and higher-income youth is due to unequal access to summer learning opportunities. Some of our grantees working to address this include:

- **The YMCA:** The grant supported a “Brotherhood/Sisterhood” program for middle-school students, in partnership with the Tacoma Urban League. In addition to focusing on academics, the YMCA provided mentorship along with character-building and leadership activities.
- **Communities in Schools of Lakewood** organized a Summer Fun and Learning Program for more than 100 middle-school students. The camp culminated in a celebration assembly that featured motivational speaker and rapper LaMar Hudson, who focused on self-esteem, peer pressure, and school.
- **Eatonville nonprofit organization Parents and Students in Action** offered three week-long summer camps through its Outdoor Connection program. Activities focused on hands-on learning about the Earth, environment, and natural resources, and included camping and hiking in Mount Rainier National Park and near the Nisqually River.

In 2015, the Community Foundation is deepening and expanding the Summer Learning Grants. Through increased funding and a new nonprofit learning community designed

to share best practices and help address barriers to reaching rural and low-income communities, more youth and youth-serving organizations will be reached.

INCREASING THE QUALITY OF YOUTH PROGRAMS

The Community Foundation's expanded focus on increasing the quality of youth programs is grounded in nationally recognized and state-wide-adopted standards for quality. The best after-school programs create safe, supportive, and productive environments for young people. High-quality programs are especially effective in underserved communities that offer limited enrichment opportunities for youth.

Research has shown that students who participate in high-quality after-school programs:

- ▲ Show academic and behavioral improvement
- ▲ Improve their attendance and graduation rates
- ▲ Develop better confidence and overall health
- ▼ Show reduced use of drugs and alcohol

Since partnering with The Raikes Foundation to launch this initiative in 2011, 18 nonprofits have participated in a quality-improvement process. Program staff who participate in training and coaching learn how to apply best practices and create spaces where youth can thrive. They become part of a peer collaboration community and help create key support infrastructure for families and communities.

In 2015, the Community Foundation is leading efforts to continue expanding this training across Pierce County to more organizations and individuals committed to supporting young people.

Peace Community Center Spotlight

By participating in our quality-improvement initiative, Peace Community Center assessed the strengths of its programs and identified new ways to support the success of both students and staff.

One result was the creation of a student council, allowing students like Lily the chance to practice leadership skills and create new opportunities for their peers.



LILY'S STORY

When Lily Caldera was in fourth grade, she read at the second-grade level. By the time she was in eighth grade, her reading skyrocketed to a 12th-grade level.

The foundation for Lily's success was Hilltop Scholars, a Peace Community Center program that combines an

intensive summer academy with academic coaching during the school year.

“It was hard to get there but the program helped me tremendously,” shares Lily. “It's really built my self-confidence.”

That boost of confidence inspired the Jason Lee Middle School student to start and lead a book club. Lily says the experience both taught her a lot and gave her the opportunity to mentor other students.

She encourages other youth to pursue their passions and leadership skills. “Go for it,” is

her advice. “It's an awesome experience.”

One of Hilltop Scholars' goals is to prepare students for success in college, and a college-readiness component is part of the summer academy.

Lily, who is now a high-school student, plans to pursue her longtime dream of attending Pacific Lutheran University. She would be the first person in her family to obtain a college degree.

She credits the staff of Hilltop Scholars with helping her every step of the way during her three years in the program.

June Fayette Scholarship Endowment Fund: Established in 2009 through June's will, this scholarship supports graduating seniors in the Tacoma Public School District.

"In a low-income family, money is the deciding factor in almost every decision related to college. Thank you for investing in my future. I plan to pursue a computer-related career and return to work in Tacoma." - Truc Ly

Fuchs-Harden Educational Fund Scholarship: Established through a legacy gift of Anna R. Harden, this scholarship rotates each year between high schools within Pierce County.

"I have been an independent woman since I was 12 years old. I am what they call a 'misplaced youth,' meaning I did not reside with any member of my family, nor do they help me financially. I only found my strength through writing...and am truly honored to attend Western Washington University and further my passion for the only thing that kept me going while I was alone." - Hayley

Bethel Education Scholarship Team Fund (B.E.S.T.): Since the early 1990s, B.E.S.T. has helped provide Bethel School District students the opportunity to pursue higher education, including two- or four-year degrees or vocational training.

"Right now, I am at Universal Technical Institute, learning how to diagnose electrical issues. I am learning so much. I feel like I've won the lottery. It means so much to me that people want me to achieve my dream to become a diesel mechanic." - Ryker

Increasing Opportunity

Investing in a scholarship fund is a powerful way to create a better future for individuals and their families.

The Community Foundation is home to numerous scholarship funds set up by donors committed to reduce financial barriers for people to achieve their academic dreams.

2014 - BY THE NUMBERS

85+ scholarship funds managed
275+ individual scholarships awarded
\$280,000+ invested in our future

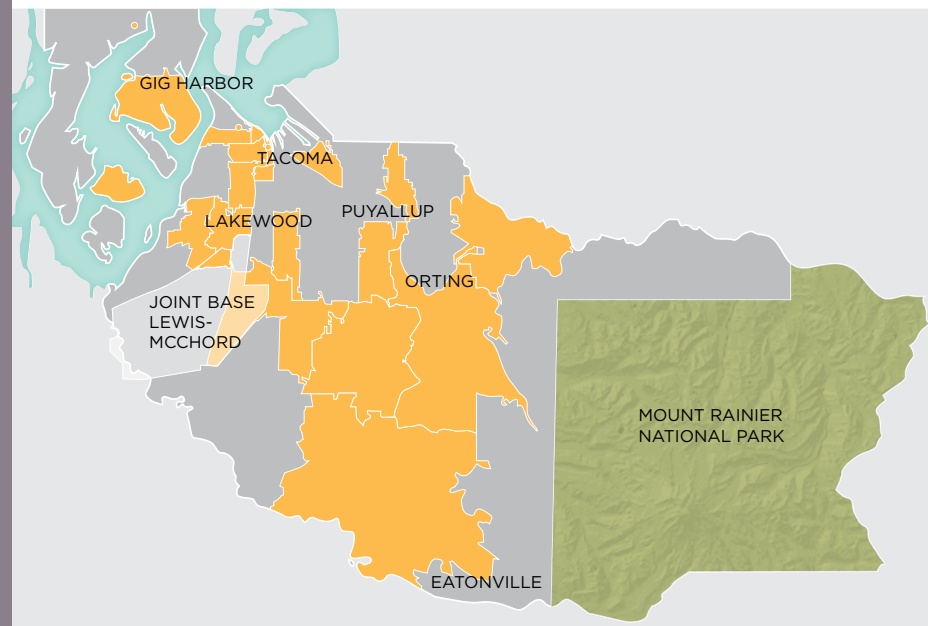
CREATING YOUR LEGACY OF GOOD

Scholarship funds are formed for a variety of reasons: to honor a loved one, to benefit a specific population of students, to help those with the fewest financial resources. Anyone can set up a scholarship fund, and there are many different approaches. The Community Foundation team will work with you to ensure your scholarship reflects your personal interests and values.

SCHOLARSHIP COMMITTEE MAP*

Each scholarship award is recommended by volunteer committees located across the Pierce County region.

- PIERCE COUNTY
- SCHOLARSHIP COMMITTEE PARTNERS



*Scholarship committees based on zip code

Exploring Connection

Nestled between the foothills of Mt. Rainier and the bustling waterways of Puget Sound, our region is fundamentally tied to and defined by water. Inspired to explore the relationship water has on the natural and social world, **2014 Foundation of Art Award winner Elise Richman** drew upon aerial photography and a study of the motion generated within a ripple tank.



"I'm interested in creating paintings that embody an integral connection between process and form," shares Elise. "This relationship mirrors the formations and phenomena that infuse the natural world as well as social dynamics."



As the award winner, Elise created *Ebb & Flow*, a complex, multilayered painting. The composition uses ink, acrylic and liquefied powdered pigments she mixed herself before applying. Puddles and pools of ultramarine and turquoise cover the large canvas.

"I allow the pigments to meld, intermingle, and resist one another. I then respond to the pools, rivulets, and inlets that

emerge, adjusting the quality of particular edges and heightening or obscuring contours," Elise shares.

The result is a study of shifting and dissolving boundaries, of intersecting and interconnected systems that sustain our natural world and shape our complex social fabric.

ABOUT ELISE RICHMAN

Elise Richman has exhibited her work nationally in commercial galleries, nonprofit spaces, and university galleries. Her innovative, process-based paintings explore elements of the material world and states of flux. Elise received her BFA in painting from the University of Washington and her MFA in painting from American University in Washington, D.C. She is an associate professor of art at the University of Puget Sound. *Learn more at: eliserichman.com.*

ABOUT THE FOUNDATION OF ART AWARD

In 2008, the Community Foundation established the Foundation of Art Award to recognize the essential role art plays in our community and to honor local professional artists. Today, this award has become one of the most notable in the region and is made possible by the Donald R. and Mary E. Williams Art Fund.

Each year, more than a dozen artists are nominated and one is selected to create a commissioned piece representing the artist's interpretation of the community.

View each of the nominated artists' work in our online Foundation of Art Gallery at: gtcf.org/art.



Expanding Reach

A community is strongest when people are connected, engaged, and willing to work together for change. Spark Grants help make this happen. Each \$1,500 micro-grant backs innovative ideas that connect people with one another, ignite positive community change, and promote a culture of working together.

Spark Grants reflect the power of individuals and small groups to create change in ways that are meaningful to them and help improve the community, creating a ripple effect.

A year after the Community Foundation launched Spark Grants, the results speak for themselves. Recipients report that the Spark Grant:

- Boosts their engagement, confidence, and leadership skills
- Provides a “seal of approval” for their projects that helps bolster their success
- Makes them more motivated to create change; the majority plan to continue their project
- Connects people through volunteer leadership roles and shared activities

- Pacific Lutheran University art student Saiyare Refaei returned from a study abroad trip to Oaxaca, Mexico, inspired by the power of engaging community through art. Her proposal to **create a mural** as a way to engage Parkland residents in sharing their stories quickly took root. The mural showcases the unique memories and ideas of the community. *Watch this new Parkland landmark come to life at: gtcf.org/Parklandmural.*
- Tacoma Poet Laureate Lucas Smiraldo’s **Laureate Listening Project** creates an interactive audio anthology that records the lives, ideas, concerns, and celebrations of our diverse community through the vehicle of poetry. *Read Lucas’ poem “Spark” on our blog at: gtcf.org/blog.*
- Dietrich Baker’s **Literacy for Life** project used a young adult fiction novel to unite Ford Middle School around the fun of reading. For some of its 900 students, this was the first book they ever owned. *See the excitement that builds around this project online at: gtcf.org/literacyforlife.*
- Ben Warner is passionate about putting a positive face to Tacoma’s skate culture. Through **Alchemy Indoor Skatepark & Education Center’s** community outreach, he watches youth volunteers act as role models while teaching skateboarding to elementary school students. *Watch skate-clinic videos created by the youth at: gtcf.org/skatevideo.*



CONGRATULATIONS TO THIS YEAR'S SPARK GRANTEES

5th Annual Soberbowl



Hosting a free, clean and sober Superbowl party that reaches hundreds in the Tacoma area.

Alchemy Indoor Skatepark & Education Center Community Outreach

Putting a positive face to Tacoma skate culture and encouraging academic achievement.

Camp Breakout!

Offering a free, five-day camp in Sumner for low-income children to explore creativity and expression through the performing arts.

Captain's Council

Fostering leadership development through a two-day retreat that brings together student athletes from all five Tacoma public high schools.

Dream Music Project

Providing a platform for local, diverse, and talented young music artists to share their gift with the community through a series of short concerts.

Gig Harbor/Key Peninsula Suicide Prevention Coalition

Teaching youth, parents, and community members about awareness and resources associated with teen suicide.

6th Grade Camp (Colt Camp)

Connecting incoming sixth-grade students from four elementary schools with fellow students, teachers, and families to help ease their transition to middle school.

Laureate Listening Project

Increasing access to and appreciation for poetry by offering a vehicle to create and record poems that represent Tacoma’s spirit of place.

LAZ: Hilltop’s Finest Odes, Lyrics, Verses, and Tales

Encouraging the under-represented to share their stories through written word.

Literacy for Life

Implementing a schoolwide, interactive reading project at Ford Middle School that brings in students, staff, and families for fun activities.

Parkland Community Mural Project

Bringing the community together around the development and painting of a mural representing Parkland.

Stand Up Dads Daddy/Daughter Ball

Celebrating the important relationships between fathers and daughters with music, dancing, and motivational speakers. The ball kicks off a monthly support group for single fathers with daughters (Stand Up Dads).

Student Kitchenette Project

Bridging the space between traditional and special-needs students at School of the Arts, teaching students with disabilities life skills through leadership in a communal student kitchenette space.

Tacoma Hilltop Street Fair



Promoting the arts and economic development of Hilltop through performances and family-friendly activities that encourage people to share their interests, talents, and hobbies. *Watch highlights of the event at: gtcf.org/streetfair.*

#WE SUPPORT YOU#

Providing low-income Pierce County high-school seniors the financial resources to be involved in extracurricular school activities.

WILLO - Celebrating the Voices of Women & Girls

Harnessing the power of stories through a storytelling festival that showcases the diverse stories of Tacoma women and girls and brings together women of all ages.



Creating Community



Former students gather to celebrate the Japanese Language School Memorial, the result of a community fundraising effort that included a lead matching grant from the Donald R. and Mary E. Williams Arts Fund.

Last December, the University of Washington Tacoma campus unveiled a beautiful memorial sculpture that pays tribute to the city’s Japanese history. The public art piece was placed along the Prairie Line Trail, the former site of the Japanese Language School.

Created by renowned artist Gerard Tsutakawa—known for his “Mitt” sculpture at Safeco Field in Seattle—the highly visible artwork serves as a focal point for community gathering and a link between cultures. Reminiscent of the Japanese flag, the sculpture is titled “Maru,” after the circle inside the flag’s rectangle.

The Japanese Language School Memorial was the result of a community fundraising effort that included a lead matching grant from the Donald R. and Mary E. Williams Arts Fund. The fund is part of the legacy of Donald “Don” and Mary Williams, who entrusted us with a \$15 million estate gift in 2011 toward causes they cared about.

The grant to the memorial project honors Don and Mary’s interest in Japanese and Asian art and their passion to make a difference in the community.

Between 1911 and 1942, the Japanese Language School was a thriving learning center where Japanese youth came after school to learn their language, culture, and history.

The center allowed the students to remain connected to their Japanese heritage while creating a strong foundation as American citizens. It quickly became a cultural beacon for the entire Japanese community in Tacoma.



The school waned after World War II internments and the arrest of its principal—and the building fell into disrepair. But its memory continued to have a special place in the hearts of former students and the community.

The newly installed, interactive sculpture, which is the culmination of many years of community efforts, ensures that the legacy of the Japanese Language School is not forgotten.

The Donald R. and Mary E. Williams Arts Fund’s grant to the Japanese Language School Memorial celebrates the school’s contributions to local history and commemorates our nation’s history as well. The gift helps create a poignant space where the community can gather once again.

Preserving Your Legacy

Including a charitable gift in your estate plan is a simple way to create your permanent giving legacy without affecting your financial security. You can either specify a dollar amount, a particular asset, or a percentage of your estate.

A charitable bequest has several advantages. Besides directly supporting your community, your gift may reduce your estate taxes. A bequest can also take various forms, depending on your objectives. You can designate a bequest to the Community Foundation or set up life-income plans that provide income to yourself and/or your beneficiaries.

HAROLD H. GALBRAITH - Legacy Society Member Emeritus



A Tacoma native, Harold Galbraith had a deep empathy for animals, especially cats. He established multiple charitable gift annuities at the Community Foundation to provide income during his lifetime and future support to the organizations he most cared for. Harold’s legacy of giving will live on for years to come, helping conserve and support the animals he loved.

What makes a fund at The Greater Tacoma Community Foundation different?

Diligent and relentless stewardship. *We manage the impact of your philanthropy, not just the numbers in your account. Grants from your fund go to nonprofit organizations that meet the highest standards of performance and are the best and most effective non-profits serving our communities.*

Each grant does the good you intended it to do, generation after generation.

A gift by bequest to The Greater Tacoma Community Foundation makes you a member of our **Legacy Society**, an association that honors and recognizes the generosity and vision of donors who have made a commitment to our community through the lasting impact of a planned gift.

If you have included the Community Foundation in your estate plans and are not a recognized Legacy Society member, please contact our staff. We want to be sure that we accurately understand and properly carry out your wishes. We can be reached at **253.383.5622**.

LEGACY SOCIETY MEMBERS

Anonymous donors (33)	William J. Gazecki	Mrs. Grace M. Lynch
Tony and Linda Anderson	Thelma T. Gilmur	Jean McCord
Lea Armstrong	Grogan Family	Bob Myrick
William and Margaret Barton	Tom and Laura Hackstadt	Lloyd and Carol Silver
John and Regina Becque	William and Noel Hagens	James and Myrna Sparks
Karen Bellamy	Dr. C. Stevens and Cynthia E. Hammer	Elaine Stafford
Charles W. Bingham	Mary W. Hammond	Janie and Kirk Starr
Mrs. Ruth H. Bramhall	James and Enid Harris	Doris G. Stucke
Rick and Francie Carr	John and Carole Holmaas	Dr. Pamela J. Transue
John and Sharon Ciccarelli	Kathleen Susan Keele	Timothy and Barbara Tucci
Ann and Peter Darling	J. Thomas Kuebler	Bob and Emily Vincent
Mrs. Eulalie Fisher	John and Evelyn La Fond	Whitney Family
Dick and Mary Foege	Amy and David Lewis	

Growing Partnerships



A collection of living art, the Pacific Bonsai Museum features world-class bonsai from around the globe.

The Community Foundation partners with a number of supporting organizations, each with its own unique philanthropic goals and approach. The Pacific Bonsai Museum exemplifies the success of these types of partnerships.

The museum features world-class bonsai from around the globe and welcomes nearly 30,000 visitors a year. Free to the public, this cultural gem offers contemporary and traditional bonsai exhibits, tours, and educational events.

Weyerhaeuser Company opened the collection in 1989, in conjunction with the Washington State centennial celebration. The collection was established to symbolize Weyerhaeuser's long-term commitment to its customers, community, and forest resources. At the end of 2013, the corporation gifted the entire collection to a new nonprofit, The George Weyerhaeuser Pacific Rim Bonsai Collection, now known as the Pacific Bonsai Museum.

The Community Foundation worked to steward this transition, accepting the Pacific Bonsai Museum as a supporting organization. By operating under the umbrella of the Community Foundation, the Pacific Bonsai Museum gains administrative oversight and technical expertise while maintaining its individual identity as a separate nonprofit.

This partnership helps ensure the Pacific Bonsai Museum continues to serve as a cultural and educational resource for the South Sound community and beyond.

LAKEWOLD GARDENS

Friends of Lakewold, dba Lakewold Gardens, joined as a supporting organization in 1987 and celebrated its 25th anniversary in 2014. During this milestone year, Lakewold Gardens dedicated the Donald & Mary Williams Garden Room—a two-year project funded by a grant through the Community Foundation—and was named to the National Register of Historic Places.

Hear the history of Lakewold Gardens at: www.gtcf.org/lakewold.



Fostering Philanthropy



Charles “Charley” and Barbara Bingham moved to Tacoma in 1960 and immediately immersed themselves in the community. Barbara volunteered for the Open Housing campaign in Tacoma, then later with the Commission on Children, Youth and Families, and helped start City Club of Tacoma.

Charley served on the boards of Puget Energy and American Leadership Forum, among others. Together, they were involved with United Way as well as scholarship programs at Tacoma Community College and University of Puget Sound, and started a donor-advised fund at the Community Foundation, where Barbara served on the board.

Charley and Barbara used their donor-advised fund as a way to give back, and a tool for engaging their four children, including daughter Debbie Bingham, in philanthropy. A mother of three, Debbie has followed in her parents' footsteps of service, including as a volunteer for the last decade with The Fund for Women & Girls.

How would you describe your family's values around philanthropy?

We were always taught that giving back to your community is very important. Everyone deserves an equal chance, so we valued helping those who didn't have the same opportunities that we had.

My father grew up in rural Oregon as one of six boys. Money was tight and four of his brothers had to drop out of high school to work and support the family. He has always felt fortunate that he had opportunities that perhaps they didn't.

Your father has used the donor-advised fund as a way to work closely with the family in giving. What has that been like?

The experience has been very rewarding and humbling. It's a great opportunity to learn about the many wonderful programs in our community and also the many needs. Thinking strategically about your philanthropic giving is an important and challenging issue.

Can you speak to your family's support of kids and education?

Supporting children and educational opportunities will always be central to our giving. My father was only able to go to college because he received a full scholarship and has always believed that it is his responsibility to see that as many students as possible have opportunities to fulfill their dreams. He believes in giving people the training and/or educational opportunity to choose their own path in life.

How do you select which organizations to fund?

We look for organizations that stand for all that my parents do: providing the basis for equal opportunity for all people regardless of race, sex or religion and being good stewards of our environment.

What have been some of the benefits of having a donor-advised fund?

It helps keep our giving focused. And honestly, it simplifies things—the Community Foundation does a great job of managing the investments and researching possible grant-ing opportunities compatible with our giving.

I believe the Community Foundation is a tremendous asset to this community. The various initiatives it has rolled out over the years, such as the Youth Philanthropy Board and the Spark Grants, are excellent examples. The staff deeply cares about Tacoma and Pierce County.

Expanding Giving

Part of what makes The Greater Tacoma Community Foundation unique is our diverse and expanding group of donors and fundholders. We're proud to work with hundreds of visionary people who selected us as their partner in giving. A selection of funds established this past year include:

Barbara Adell Rowland Culinary Scholarship *Empowering Students to Achieve Their Dreams*

A recently retired Stadium High School culinary teacher, Barbara Rowland remembers the day she received a college scholarship and the swelling sense of pride that came with it. To empower students after her retirement, she established the Barbara Adell Rowland Culinary Scholarship at the Community Foundation to foster job-skills training for students passionate about cooking.

Centerforce Fund *Pursuing an Inclusive Community*

A local nonprofit, Centerforce supports greater community participation among

disabled adults through education, employment, and community living opportunities. By placing its endowment with the Community Foundation, Centerforce can pursue its vision for a more inclusive community without extra administrative burdens.

Lakewood Community Foundation Rose Murphy Endowment Fund *Honoring a Life of Service*

Many in the Lakewood community fondly remember Rose Murphy for her volunteer service, professionalism, and delectable home cooking. The Lakewood Community Foundation partners with us to oversee Rose Murphy's permanently endowed fund, honoring her legacy to improve the quality of life in Lakewood.

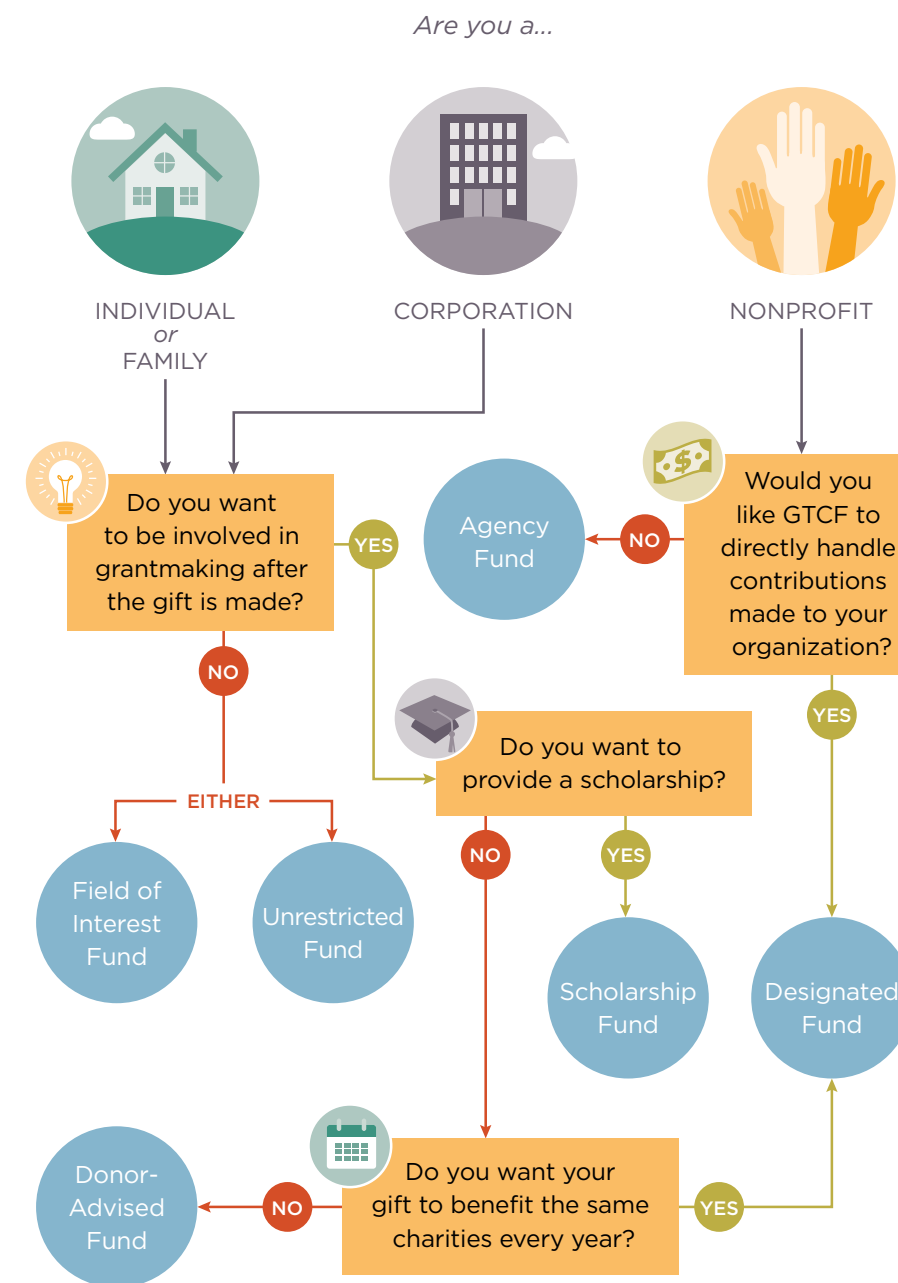


Each fund is a direct reflection of the donor's personal interests, generosity, and dedication.

We take our responsibility seriously to be good stewards of the community assets and donor funds entrusted to us. Since our creation in 1981, we have grown to include more than 450 charitable funds established by individuals, families, organizations, and businesses. Through the generosity of people who set up funds with us, we are able to make grants to support a wide range of causes that are vital to the health of our community.

Establishing a fund is a quick, easy, and effective way to invest in the future of our community. There are many reasons to start a fund and many flexible fund options to choose from.

FIND YOUR FUND



HOW TO START A FUND

DONATE

- Cash
- Real Property
- Stock
- Other Assets

YOUR FUND

- Grow & Give

COMMUNITY IMPACT

- Arts & Culture
- Environment
- Education
- Human Services
- Community Development
- Scholarships

To start a fund or to learn about planned giving options to support causes you care about now and into the future, contact our philanthropic services team at [253.383.5622](tel:253.383.5622) or donorservices@gtcf.org.

Celebrating Impact

YEAR-AT-A-GLANCE

A look at the remarkable people and events that made 2014 one of our best years yet.



- ¹ 200+ people joined in our **Community Celebration**, designed to showcase the many people and organizations working to spark positive change in our community.
- ² **Graduate Tacoma** hosted its **first report to the community**. Hundreds gathered to hear about the positive progress of this community-wide movement to support every student in Tacoma from cradle to college and career.
- ³ 525 people celebrated women and girls at the FFW&G **Power of the Purse luncheon**. The inspiring event raised more than \$80,000.

- ⁴ Dynamic discussions filled The Fund for Women & Girls' two-part **panel series** on work/life balance.
- ⁵ The **Hilltop Diversitree project**—collaboratively funded by Community Foundation donors along with the city of Tacoma—brought 240 trees and environmental benefits to the Hilltop Business District.
- ⁶ 75+ people gathered for the 6th annual **Foundation of Art Award exhibit**.

⁷ **30 local funders** joined the Community Foundation for an educational event exploring opportunities for further collaboration and alignment around youth.

⁸ Professional advisors and their clients enjoyed an educational and entertaining evening at our **Wine & Wisdom event**, featuring a keynote address on preserving family values and capital.



- ⁹ Community Foundation staff and board attended the **biannual learning cohort** of community foundations, United Way organizations, and identity funds that are working in partnership with the Bill & Melinda Gates Foundation to alleviate intergenerational poverty.
- The community celebrated the remarkable life of University of Washington Tacoma (UWT) chancellor and Community Foundation board member Debra Friedman. The **Debra Friedman Memorial Scholarship**, at UWT, continues to honor Debra's commitment to student success.

- ¹⁰ The Northwest Native Plant Garden at Point Defiance celebrated its 50th anniversary with the **dedication of Mary's Meadow**, named in honor of Mary Williams, a past Tacoma Garden Club volunteer. Mary's Meadow was supported through the Donald R. and Mary E. Williams Horticulture Fund.
- ¹¹ New and returning members of the **Youth Philanthropy Board** kicked off another year of service.



Organizational IMPACT

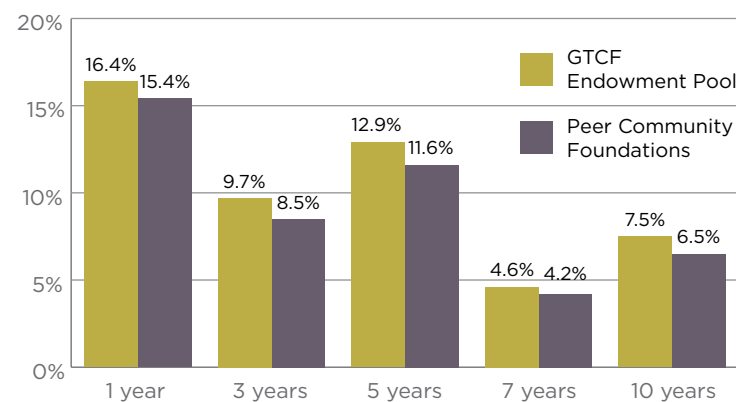
By The Numbers

The Community Foundation employs a diversified growth strategy for our endowment portfolio. The goal is to generate a long-term rate of return sufficient to offset inflation, administrative and management fees, plus regular grantmaking distributions. Grantmaking distributions are currently calculated at 4.3 percent of the 16-quarter rolling average market value for permanently endowed funds.

Our investment model is based on modern portfolio theory and employs strategically diversified asset allocation. Our endowed funds are pooled to provide investment management economies of scale and to access investment vehicles that are unavailable to smaller, individual funds.

Our Investment Committee is comprised of experienced professionals with extensive backgrounds in investment and finance. The committee adheres to disciplined decision-making processes, guided by our investment policy statement.

COMPARATIVE INVESTMENT RETURNS**



INVESTMENT COMMITTEE

- John Wiborg, President, Stellar Industrial Supply, Inc., *Chair*
- Brad Cheney, President, Ben B. Cheney Foundation
- Debra Friedman,* Chancellor, University of Washington Tacoma
- John James, Consultant
- Douglas Lineberry, Attorney, Fiduciary Counselling, Inc.
- Kathryn F. McAuley, Vice President, Weyerhaeuser
- Steven M. Murray, PhD, Russell Investment Group
- Doug Van Allen, Jefferson County Community Foundation

INVESTMENT ADVISOR

The Community Foundation employs Fund Evaluation Group as our investment consultant. Fund Evaluation Group advises on assets of \$51 billion.

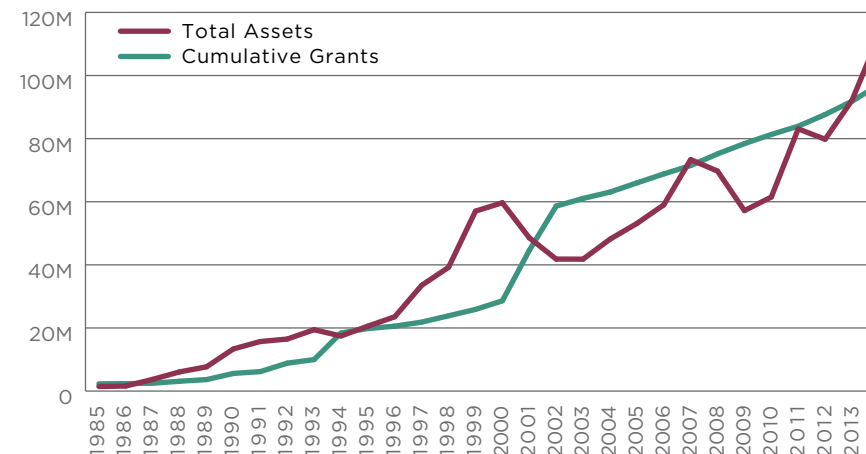
INDEPENDENT AUDITOR

Dwyer, Pemberton & Coulson, P.C.
Our audited financial statements are available on our website at www.gtcf.org. Form 990 is available upon request.

*Deceased

**As of 6/30/14

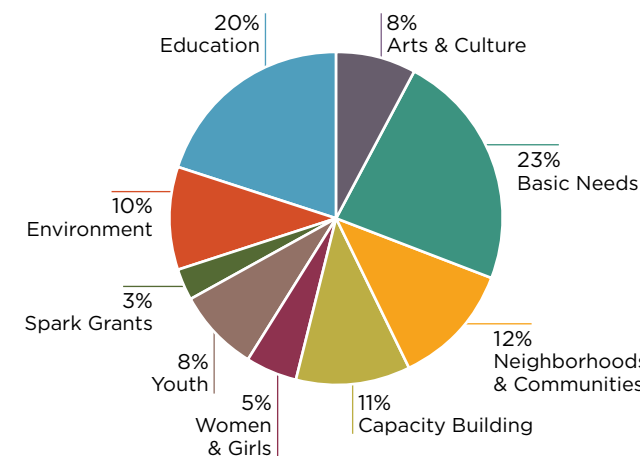
TOTAL ASSETS & CUMULATIVE GRANTS



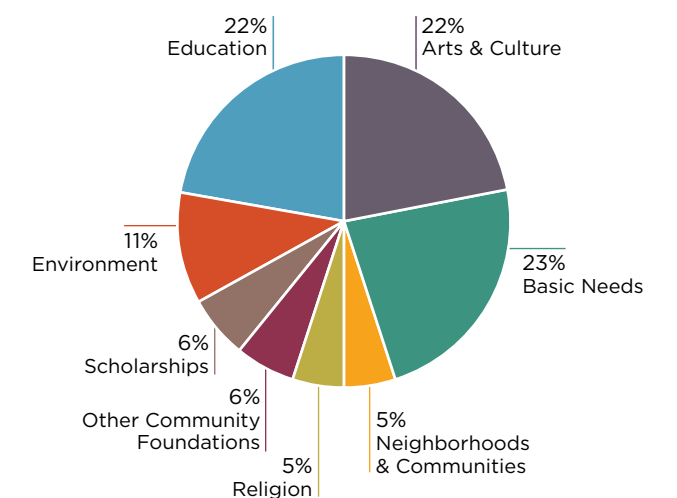
We're proud to support our nonprofit grantees in their work to make our community even better.

Review the list of this year's grantees at: gtcf.org/annual-report.

FOUNDATION-DIRECTED GRANTS*



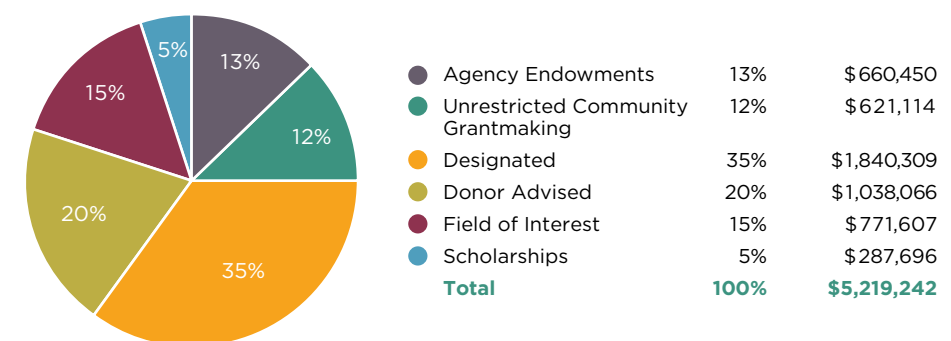
DONOR-DIRECTED GRANTS



TOTAL GRANTS

Category	Amount	Percentage
Foundation-Directed	\$941,293	18%
Donor-Directed	\$4,277,949	82%

GRANTS DISTRIBUTED BY FUND TYPE



*Includes Unrestricted Community Grantmaking and Field of Interest Funds

Donor List

FOUNDING DONORS

A Founding Donor is any bank, business, charitable organization, foundation or individual who made a gift of \$25,000 or more toward the Unrestricted or Administrative Endowment Funds during the Community Foundation's first decade.

Elbert Baker II
Ben B. Cheney Foundation
Norton Clapp
Elmer H. Davis
George L. Davis Jr.
Mary Kathryn Ellis
Forest Foundation
Gensco, Inc.
Junior League of Tacoma
G.E. Karlen
Elizabeth B. Kelley
W. Howarth Meadowcroft
Bernard S. Miller
Edward P. Miller Foundation
Sue D. Nilsson
James R. Paulson
Puget Sound Bank
Cleve A. Redig
The Seattle Foundation
– Rogers Fund
Marjorie Stansfield
Univar Foundation
Mr. & Mrs. George H. Weyerhaeuser
Robert B. Jr. & Helen C. Whitney
Ann Wiborg

GIFTS TO FRIENDS OF THE FOUNDATION

Anonymous
Gina and Tim Anstey
The Bamford Foundation
Bill and Peggy Barton
Karen Bellamy
Ben B. Cheney Foundation
Barry and Shirley Brockmann
Marydale Brooks
James F. Brown
Elizabeth E. Brusco
Ruth Cannon
Rick and Francie Carr
T. Gary and Diane Connett
Ann and Peter Darling
Richard and Clare DeVine
Eulalie Fisher
Fund Evaluation Group
Colleen and Dr. Douglas Gant
Andie Gernon
Thelma T. Gilmer
Robert Girvin
Joe and Sandra Gordon
Ed Grogan
Steven and Sandy Hill
John and Carole Holmaas
William and Andrea Holt
Maro Imirzian
Sherlyn and Bob Iverson
Laurie Jenkins and Laura Wulf
Arlene Joe and Richard Woo
Alice and Paul Kaltinick
Kampbell & Johnson, PLLC
Sherrana and Kevin Kildun
John and Lisa Korsmo
Babe Lehrer
Amy and David Lewis
Scott Limoli and Wendy Welch
Rose Lincoln Hamilton and Gordon Hamilton
Lamont C. Loo
Dave Martin
Joe and Gloria Mayer
Pamela Mayer
Jean McCord
Keith and Kathleen McGoffin
Claire Mendenhall
Doug and Heather Neff
Stanley and Sharon Palmer
Anthony G. Panagiotu
Carol Park
Carla and Bill Pelster

Van Perdue
Elyse and Kenny Rowe
Hal Russell and Kris Holden
Antonio Sablan
Kathryn and Joseph Scorcio
Kit and Gary Severson
James and Phyllis Shoemake
Lloyd and Caroll Silver
Judith N. Sloan
Ronald and Carol Stockdale
Terry and Joanne Stone
Patricia Talton
Cindy Thompson
Fred L. and Dorothy Tobiason
Sheri and Jeffrey Tonn
Michael and Mary Jo Tucci
Timothy and Barbara Tucci
Tom and Roberta Valentine
Nancy Vignec
John A. and Audrey L. West
Weyerhaeuser Giving Fund
John and Lesa Wiborg
Herman and Lila Widemann
Dwight Williams and Stephanie Croom Williams
Liane K. Williams
Dr. Hsushi and Ting-Ling Yeh

GIFTS OF \$1,000 OR MORE TO NEW OR EXISTING FUNDS

Anonymous
Lea Armstrong
Dr. William and Carol Baarsma
Baker Family Fund for Administration
Baker Foundation
The Bamford Foundation
Holly Bamford Hunt and John Hunt
Bancroft-Clair Foundation
Daniel Barkley
William and Margaret Barton
Dr. Ernest and Vera Ellen Bay
Karen Bellamy
Ben B. Cheney Foundation
Pamela Bendich*
Bethel Educational Scholarship Team
Bill & Melinda Gates Foundation
Charles W. Bingham
Debbie Bingham*
Blossom Benefit*
BNSF Foundation TX
Cappri A. Boitano*
Earl Borgert
Marydale Brooks

Elizabeth E. Brusco
Camp Fire Orca
Ruth Cannon
Cannon Family Fund
Centerforce
City of Tacoma
City of University Place
Columbia Bank
Comcast – Internet Essentials Gold Metal Funding
Commencement Bank
The Community Foundation for the National Capital Region
Concrete Technology Corporation
Ann and Peter Darling
Ann and Peter Darling Fund
De Falco Family Foundation, Inc.*
Richard and Clare DeVine
The Dimmer Family Foundation
Dodson Bros. Exterminating Co, Inc.
Kala Dralle and Keith Shores
Driscoll Foundation
Eastside Audio/Video
Harold R. and Jessie B. Flowers Endowment Fund
John and Buzz Folsom
Forest Foundation
Friends of Lakewood
Aurel A. Fries Fund
Harold H. Galbraith Fund
J. James and Margel Gallagher
Gensco, Inc. Fund
Gig Harbor Chamber of Commerce
Gig Harbor Fishermans Civic Club
Elizabeth and Lee Gingrich
Graham Kapowsin DFS Community Foundation
Ed Grogan
Grogan Family Fund
Brian Haynes
Sandy & Steve Hill Family Fund
Maralise Hood Quan* and Julio Quan
William and Elizabeth Hyde Endowment Fund
The Hyde Family Foundation
The Hyde Foundation
Maro Imirzian
Immedia
Sandra Jasper

Jefferson County Community Foundation
JP Morgan Chase & Co.
Junior League of Tacoma Fund
Kampbell & Johnson, PLLC
Nancy Karnik
Keep Lakewood Beautiful
Eileen and James Kelley
KeyBank Foundation
John and Lisa Korsmo Jr.
Mari and Jon Kvinsland
Lakewood Center Fund
Lakewood Republican Womens Club
Lee Belas International Scholarship Foundation
Lifetouch National School Studios
Scott Limoli and Wendy Welch
George and Mary Long Fund
Mary Long*
Joan and Fredrick Lorenz
The Lucky Seven Foundation
Lita and Paul Luvera
M.J. Murdock Charitable Trust
Madigan Foundation
Master Gardener Foundation of Pierce County
Charles N. Matejka Fund
Joe and Gloria Mayer
Joe and Gloria Mayer Fund
Pam Mayer
David and Jeanne McGoldrick
Meacham Foundation
Charles H. Meacham
Gary E. Milgard Family Foundation
Edward P. and Juanita J. Miller Fund
Grace M. and Bernard S. Miller Community Fund
Dr. Thomas J. Miskovsky and Marilyn Simpson
Nate Mocerri
Claire K. Morris Charitable Fund
Edgar A. Morrison Fund
The Morris Foundation
Multicare Health Systems
L. T. Murray III
L. T. Murray Jr.
Andrew and Eva Nelson Fund
Patricia Nelson
Sue D. Nilsson Endowment Fund

Sue D. Nilsson Unrestricted Endowment Fund
Olympic View Community Foundation (formerly Sequim CF)
Palmer Scholars Foundation
Stanley and Sharon Palmer
PCDS Guild Local 1889
PCMS Foundation
Gayle Peach
Carla and Bill Pelster
Beth and Wade Perrow
James W. and Frances C. Petersen Charitable Fund
Pierce County
Pierce County Library Foundation
Point Defiance Zoological Society
Joseph Pond
Puget Sound Bank Fund
Puyallup Tribe of Indians
Quil Ceda Village
Raikes Foundation
Dr. Jerry and Elaine Ramsey
Cleve A. Redig Fund
Revocable Living Trust
Kjell Inge Rokke
Rotary Club of Lakewood Charitable Foundation
Barbara A. Rowland
Russell Family Foundation
Merrill Ryman
Stephanie Sagle
The Seattle Foundation
Sequoia Foundation
Katharine and Gary Severson
Scott and Ronda Shelton
James and Phyllis Shoemake
Lloyd and Caroll Silver
Lloyd Silver Fund
Jay Smalling
Walter Smith and Janice Smith
Sprague Pest Solutions
Janet Stanley*
Janie and Kirk Starr
Starr Family Fund
Steilacoom Historical Museum Association
Col. Willie and Faye Stewart
Ronald and Carol Stockdale
Joy Stohr
Joanne and Terry Stone
Viora Strait

Tacoma Public School District #10
Tacoma Subaru, Inc.
Tacoma Wheelmen's Club
Thompson Family Foundation Fund
The TJX Foundation
Fred L. and Dorothy Tobiason
Sheri and Jeffrey Tonn
Alfie and Carolyn Treleven
Tucci Family Endowment Fund
Timothy and Barbara Tucci
Univar Foundation Fund
University of Puget Sound
The Vaporium Baron Enterprises LLC
Fred Walden
James Walton
Frederick and Sulja Warnick
Agnes J. Waterhouse Endowment Fund
Weyerhaeuser Company Foundation
Weyerhaeuser NR Company
George H. Weyerhaeuser
John and Lesa Wiborg
Donald R. and Mary E. Williams Arts Fund
Donald R. and Mary E. Williams Horticulture Fund
Donald R. and Mary E. Williams Unrestricted Fund
Donald R. and Mary E. Williams Youth Fund
The William H. & Mattie Wattis Harris Foundation
Carol Williams
Dwight Williams and Stephanie Croom Williams
Woodworth Family Foundation
Jeffrey Woodworth
David Wyman
Dr. Hsushi and Ting-Ling Yeh
Dr. Hsushi Yeh Donor-Advised Fund
YMCA of Pierce and Kitsap Counties

Volunteer List

The Greater Tacoma Community Foundation and its volunteers bring diverse perspectives and experiences to enhance and deepen the effectiveness and impact of the work we do together. The Community Foundation's volunteers engage, uphold, and leverage the talents of our community as we address regional issues and drive solutions.

We are thankful and proud to work with more than 100 volunteers committed to various aspects of our work.

AUDIT COMMITTEE

W. Michael McCrabb, *Chair*
Scott Limoli
Jennifer Nino
Terry Stone
Sheri Tonn, PhD
Liane K. Williams

BOARD OF DIRECTORS

T. Gary Connett, *Chair*
Gary Brooks Jr.
Debra Friedman, PhD*
Ed Grogan
Maro Imirzian
Laurie Jinkins
John Korsmo Jr.
Scott Limoli
Lamont C. Loo
Joe Mayer
Carla Pelster
Katharine Severson
Patricia Talton
Cindy Thompson
Sheri Tonn, PhD
Dwight Williams

DEVELOPMENT COMMITTEE

Carla Pelster, *Chair*
Peter Darling
Jon Flora
Ed Grogan
Tom Hosea
John Korsmo Jr.
Joe Mayer
Katharine Severson
Dwight Williams

EXECUTIVE COMMITTEE

T. Gary Connett, *Chair*
Ed Grogan
Katharine Severson
Sheri Tonn, PhD

FINANCE COMMITTEE

Sheri Tonn, PhD, *Chair*
Albert S. Bacon III

Stephen Gray
Sherlyn Iverson
Laurie Jinkins
Scott Limoli
Jennifer Nino
Terry Stone
Tom Taylor
Timothy Tucci

FOUNDATION OF ART COMMITTEE

Katy Evans
Rock Hushka
Jeremy Mangan
Amy McBride
Katharine Severson

THE FUND FOR WOMEN & GIRLS ADVISORY BOARD

Pam Barber
Debbie Bingham
Verlinda Caldwell
Kerri Feider
Allyson Griffith
Maralise Hood Quan
Deborah Howell
Joan K. Lorenz
Abigail McLane
Elinor Ottey
Kaarin Praxel
Joanne Stone
Anisha Vora

GOVERNANCE COMMITTEE

Joe Mayer, *Chair*
T. Gary Connett
Peter Darling
Maro Imirzian
Carla Pelster
Katharine Severson
Cindy Thompson

IMPACT INVESTMENT TASK FORCE

Sheri Tonn, PhD, *Chair*
Conor Boyd
Gary Brooks Jr.

T. Gary Connett
Debra Friedman, PhD*
Steven Murray, PhD
Hal Russell

INVESTMENT COMMITTEE

John Wiborg, *Chair*
Brad Cheney
Debra Friedman, PhD*
John James
Douglas J. Lineberry
Kathryn F. McAuley
Steven Murray, PhD
Doug Van Allen

PROFESSIONAL ADVISORS COMMITTEE

Kerry Brink, *Chair*
Bradley Berger
Anita R. Eixenberger
Ed Grogan
Allyn Hughes
Sherlyn Iverson
Brianna M. Kampbell
Frank Laise
Scott Limoli
Lamont C. Loo
Linda Nelson Lysne
Jean McCord
Robert Pentimonti
Rebecca Stay

REAL ESTATE COMMITTEE

John Holmaas, *Chair*
Mark Hood
Terry Lee
Ronald Lunceford

SPARK GRANTS COMMITTEE

Carla Pelster, *Chair*
Sonjalyn Chandler
Danay Jones
Antonio Sablan
Mark Williams

VIBRANT COMMUNITY DISTRIBUTION COMMITTEE

Katharine Severson, *Chair*
Dr. Cameron D. Bennett
Conor Boyd
Gary Brooks Jr.
Charlie Brown
Darryl Crews
Timmie R. Foster
Julia Garnett
Dr. Dale Hall
Gordon Hamilton
Erik Hanberg
Andy Holt
Dean Kelly
Mari Kvinsland
John Lantz
Edwina Magrum
Mia Navarro
Gayle Peach
Valerie Robertson
Jessica Stokesberry
Mary Thomas
Cindy Thompson
Steve Thorndill
Sheri Tonn, PhD

YOUTH PHILANTHROPY BOARD

Austin Beiermann
Vigo Beninger
Mike Carrillo
Daniel Cross
Laura Dela Cruz
Ruby Dela Cruz
Clarissa Escalante
Curtis Escalante
Dakhota Gray
Terrance Hamilton
Jordan Henderson
Bojje Mageo
Lydia Nasser
Bianca Penuelas
Kaitlin Perkins
Rachelle Pierce
Tyree Smith
Elliot Thurber

*Deceased

Connect With Us

The Community Foundation is your philanthropic resource.

Contact us at: 253.383.5622 or info@gtcf.org

Visit our website: www.gtcf.org

- Sign up for our e-newsletter
- Search the nonprofit directory
- Access planned giving resources
- View the community calendar
- Check your fund balance and make a grant recommendation*
- Apply for grants
- Read our blog

Like us on Facebook: facebook.com/greatertacoma

Follow us on Twitter: twitter.com/greatertacoma

*For donor-advised and agency funds



Corporate Sponsors



THOMPSON FAMILY



THE FUND FOR WOMEN & GIRLS SPONSORS



